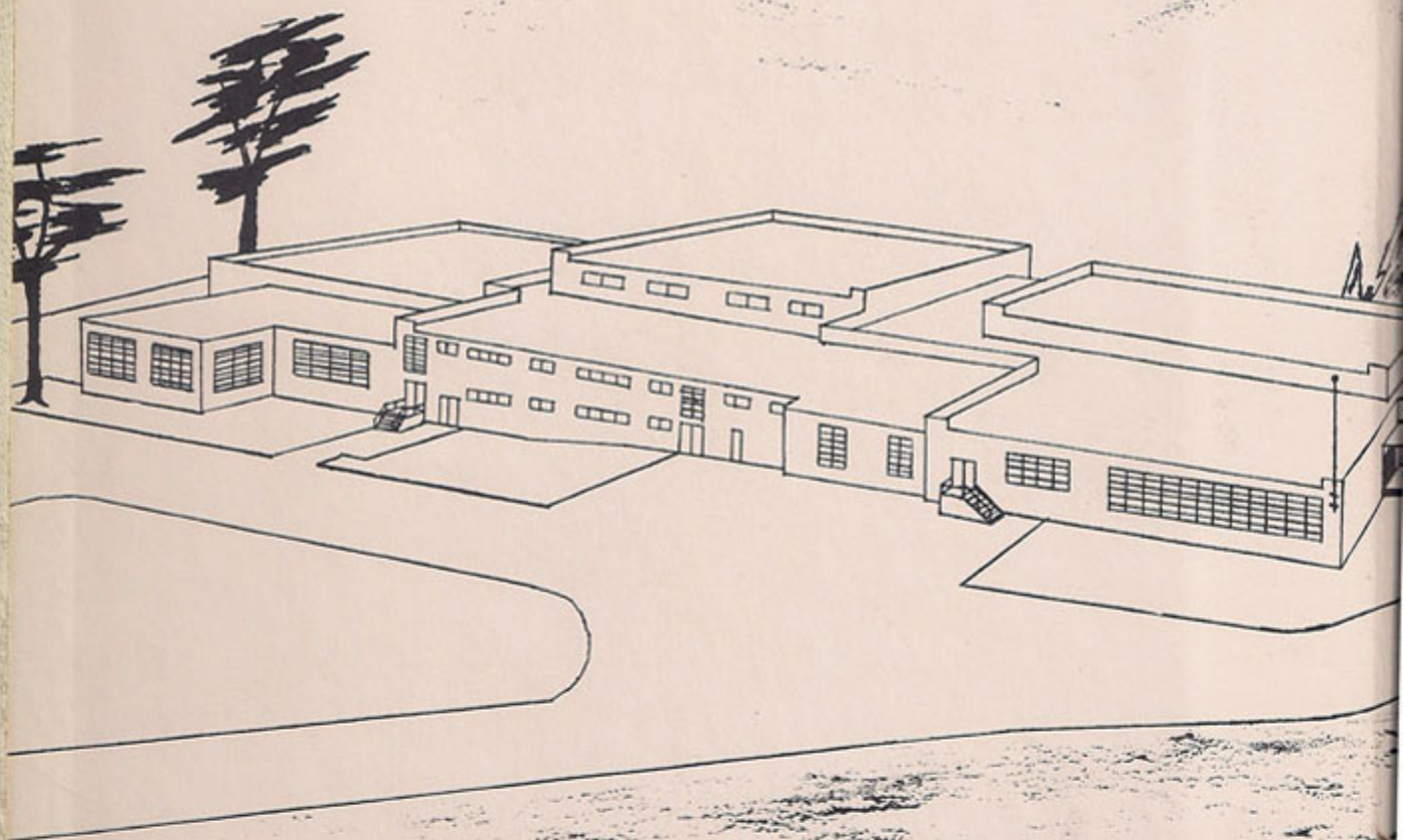
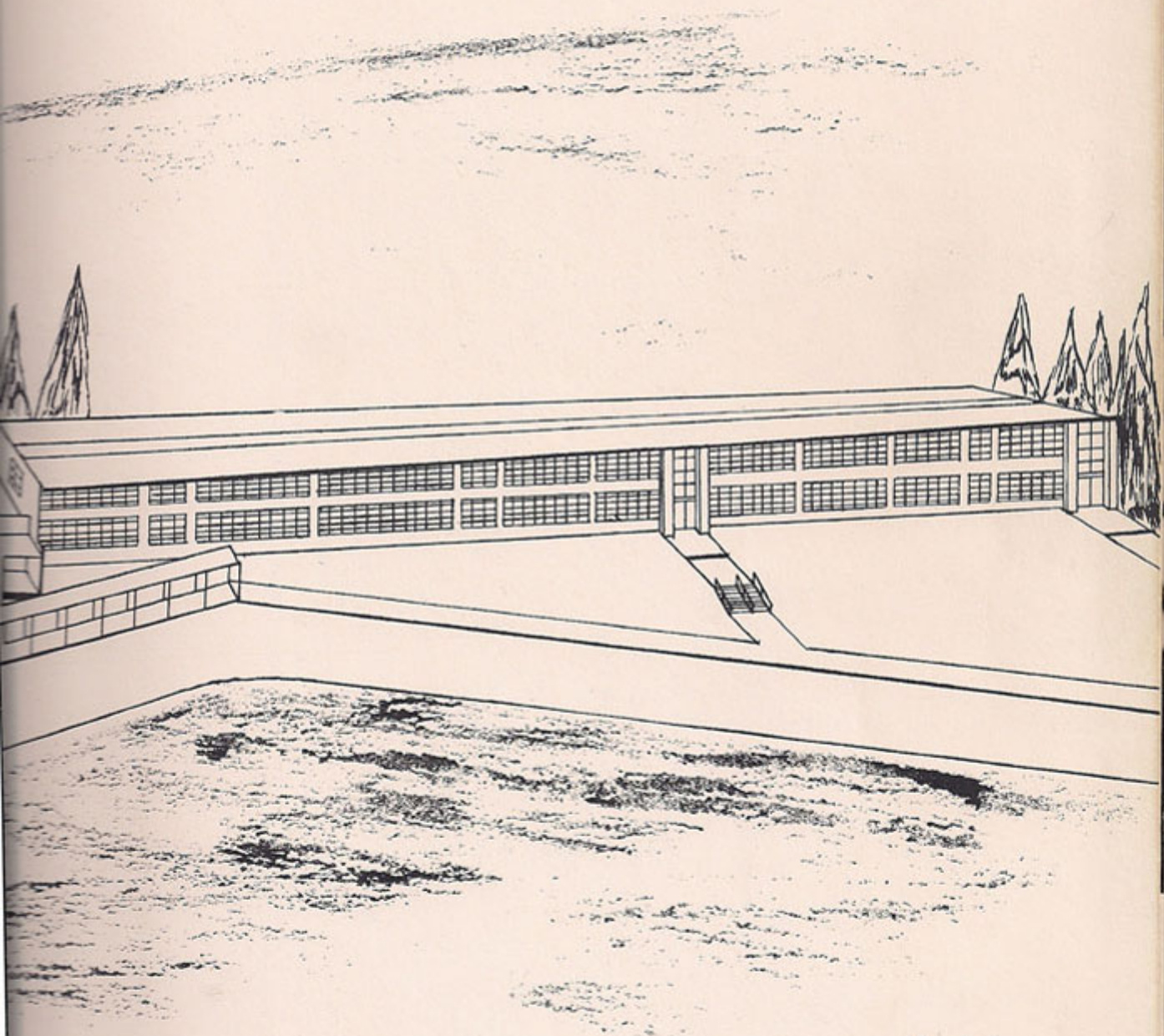




THE TORCH '59

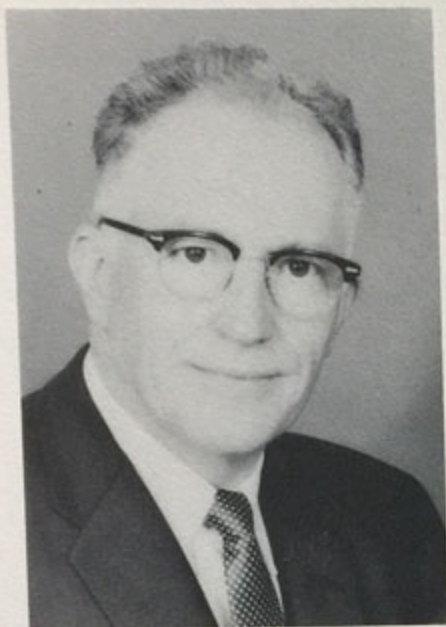
Suzanne Shaw
Cobb



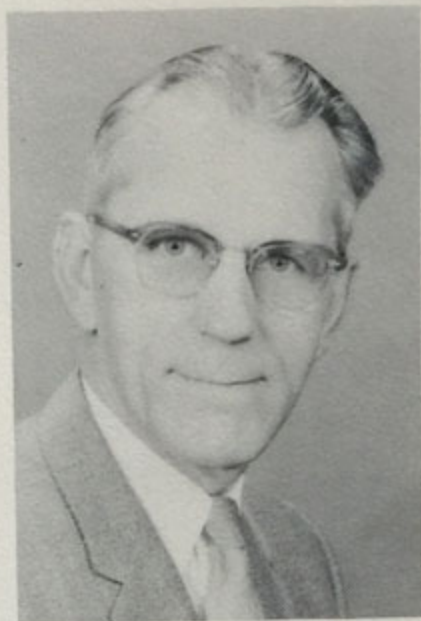


Robert Young

ADMINISTRATION



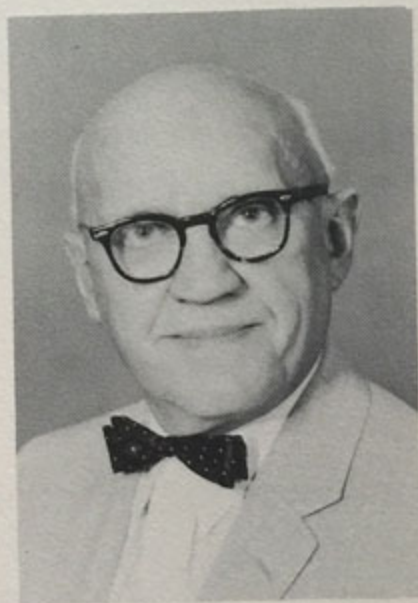
HOWARD F. C. THOMAS
Supervising Principal



GEORGE E. SCHMICK
High School Principal



EMORY R. STANLEY
Elementary Principal



WALTER R. MOSHER
Building Principal

BLUE RIDGE JOINT SCHOOL BOARD



OFFICERS OF BLUE RIDGE JOINT SCHOOL BOARD

President Herbert L. Peck
 Vice President E. R. Page
 Treasurer Charles Snow
 Secretary Orin Watkins, Jr.

GREAT BEND BOROUGH

Herbert L. Peck
 Searl W. Holmes
 Robert Moelter
 Harry L. Kinsley
 George Sine

GREAT BEND TOWNSHIP

Edward J. Austin
 Leonard Rood
 Charles Snow
 Robert Brant
 Mr. Dorothea Winfield

HALLSTEAD BOROUGH

Mrs. Helen Craft
 Archie Folk
 George Stover
 Orin Watkins, Jr.
 Howard D. Pentecost

JACKSON TOWNSHIP

Harry M. Benson
 E. R. Page
 Douglas Hall
 Glen Whitney
 Mrs. Gladys Hall

NEW MILFORD BOROUGH

Dr. P. M. Horton
 R. B. Wittig
 Vincent Stanton
 Stanley MacConnell
 Paul Walworth

NEW MILFORD TOWNSHIP

Landon Lawrence
 Mrs. Ruth Cramer
 Dwight Jennings
 Kermit VanCott
 Austin Darrow

THE SCHOOL BOARD IN ACTION

This job is mostly volunteer,
 These men and women care
 Enough about their schools each year
 To face the problems there;

They know that issues will arise,
 That conflicts will ensue,
 That lazy folks will criticize
 The job they try to do;

Yet, with a better school in mind,
 (A goal that must be won)
 The school board leaves mere
 Talk behind
 And ACTS to get things done



HARRIS C. ALLEN
Music
Great Bend



EVELYN ATHERTON
Home Economics
Great Bend



Margaret Bridges
MARGARET BRIDGES
English
New Milford



Good Luck
HELEN B. BRYANT
Music
Hallstead and New Milford
Helen B. Bryant



DOROTHY M. DEMER
English, Latin, and French
Hallstead



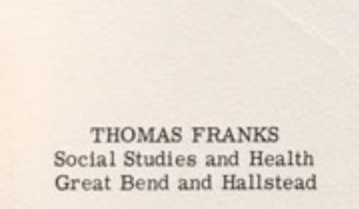
PAUL J. DEPUE
Mathematics
Great Bend



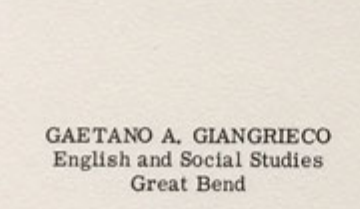
BARBARA FLORANCE
Health and Physical Education
New Milford and Hallstead



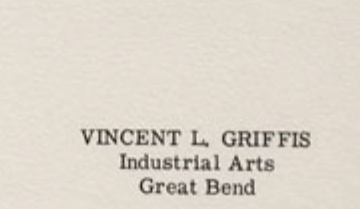
ROBERT J. FRANKS
Physical Education and Guidance
Great Bend and Hallstead



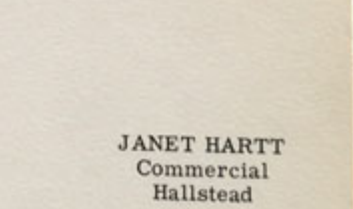
THOMAS FRANKS
Social Studies and Health
Great Bend and Hallstead



GAETANO A. GIANGRIECO
English and Social Studies
Great Bend



VINCENT L. GRIFFIS
Industrial Arts
Great Bend



JANET HARTT
Commercial
Hallstead





JOSEPH KELLEHER
Science
Hallstead



THEODORE KOCHER
Social Studies & German
Hallstead



LAWRENCE MAYLOCK
Commercial
Hallstead

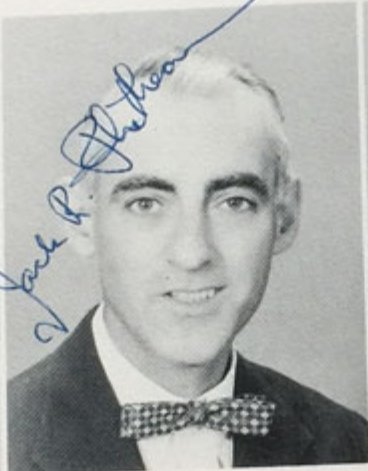


JOSEPH A. MAUGHAN
French
New Milford

Prof. J. A. Maughan



HELEN MEAGLEY
Mathematics
Hallstead



JACK PHETHEAN
Guidance & Social Studies
New Milford



WILLIAM J. POWELL
Science
New Milford

William J. Powell



EDWARD M. SETAR
Commercial
New Milford

James T. Soop

JAMES T. SOOP
Geography and Social Studies
New Milford and Hallstead

Eleanor Sturman

ELEANOR STURMAN
Home Economics
Hallstead

CHARLES F. SUPULSKI
Physical Education & Health
New Milford

WILLIAM WILLIAMS
Music
Hallstead and New Milford





JAMES YEICH
 Vocational Agriculture
 New Milford



CLAIR W. YOUNG
 Mathematics
 New Milford

Clair W. Young



FRANK M. ZIELENSKI
 Social Studies
 Driver Education
 New Milford

Frank M. Zieleski



V. RUTH AUSTIN
 Grade 6
 Health and Physical Education
 Great Bend



SARAH R. BARRETT
 Grade 1
 New Milford



FERN C. BELL
 Grades 3 and 4
 Great Bend



LAURA BURDICK
 Grade 6
 Hallstead



LOIS BURNARD
 Grade 4
 Hallstead

CATHERINE CASEY
 Grade 1
 Great Bend



JESSIE COOK
 Grade 2
 New Milford



LUCILLE DAVIS
 Grade 5
 New Milford



MARY S. DAVIS
 Grades 4 and 5
 New Milford





JANE FLINT
Special Education
Great Bend



NELLIE FRANKLIN
Grade 4
New Milford



DOROTHY GRINNELL
Grade 3
New Milford



OLWEN HARTLEY
Special Education
Jackson



MARJORIE KING
Grade 2 and 3
New Milford



EVA L. LLOYD
Grade 6
New Milford



ANNA McANDREW
Grade 3
Hallstead



MARY C. McCORMICK
Grade 4
Great Bend

PEARL A. PAGE
Grade 1
New Milford



MILDRED SEAL
Corrective Reading
New Milford



JOHN W. SEELY
Art Supervisor
Hallstead



DOROTHY SHAW
Grade 5
Great Bend



Handwritten initials: JWH



LAURENCE SMITH
Grade 6
New Milford



DOROTHY STOWELL
Corrective Reading
Hallstead



FLORENCE TANNER
Grade 5
Hallstead



MILDRED THOMAS
Grade 2
Great Bend



HELEN TYLER
Grade 2
Hallstead



ESTHER WATERMAN
Grade 1
Hallstead



MARJORIE WHITNEY
Graces 1, 2, 3
Vocal Music
Jackson



ESTHER FREEMAN
School Nurse

JOAN S. BENSON
School Secretary
New Milford

CHARLOTTE KINSLEY
School Secretary
Hallstead

MARILYN TAYLOR
School Secretary
Great Bend





Betty Follet



Thomas Goff



Lovina Fuller



Howard Price



Judy Hurlburt



Dale Jesse



Carole Woosman



Thomas Mitchell



Phyllis Havel



Donald Lawrence



Dorothy Howland



Jack Conklin



Lee Warren



Marietta Cosentino



Carl Smith

Blue Ridge High School Class of 1959



Doris Seamons



Eugene Pickering



Betty Galloway



Eunice Barry



Martha Darrow



Betty Chandler



James Wilbur, President



Jacqueline Cox, Vice Pres.



Barbara Vogel, Secretary



Edward Colwell, Treas.

Hallstead



La Vera Young



Barbara Jackson



Frank Cronk



Elwin Brown



Joanne McCreary



Aletha White



Carol Darrow, Asst. Treas.



Alice Hoal, Secretary



Nelson Lewis, President



Joan Wagner, Vice Pres.



Louise Humbert, Treas.

New Milford



Lillian Millard



Gerald Peck



Suzanne Skaritzka



Carol Darrow, Asst. Treas.



Alice Hoal, Secretary



Nelson Lewis, President



Joan Wagner, Vice Pres.



Louise Humbert, Treas.



June Merritt



Larry Fletcher



Marjorie Coons



James Hinkley



Charlotte Emerson



Duane Harvey



Kathy Barnes



Russell Carpenter



Caroline Van Loan



Duane Gutlick



Ida Scott



David Sine



Richard Terboss



Barbara Cummings



Betty Follet



Thomas Goff



Lovina Fuller



Howard Price



Judy Hurlburt



Dale Jesse



Carole Woosman



Thomas Mitchell



Phyllis Havel



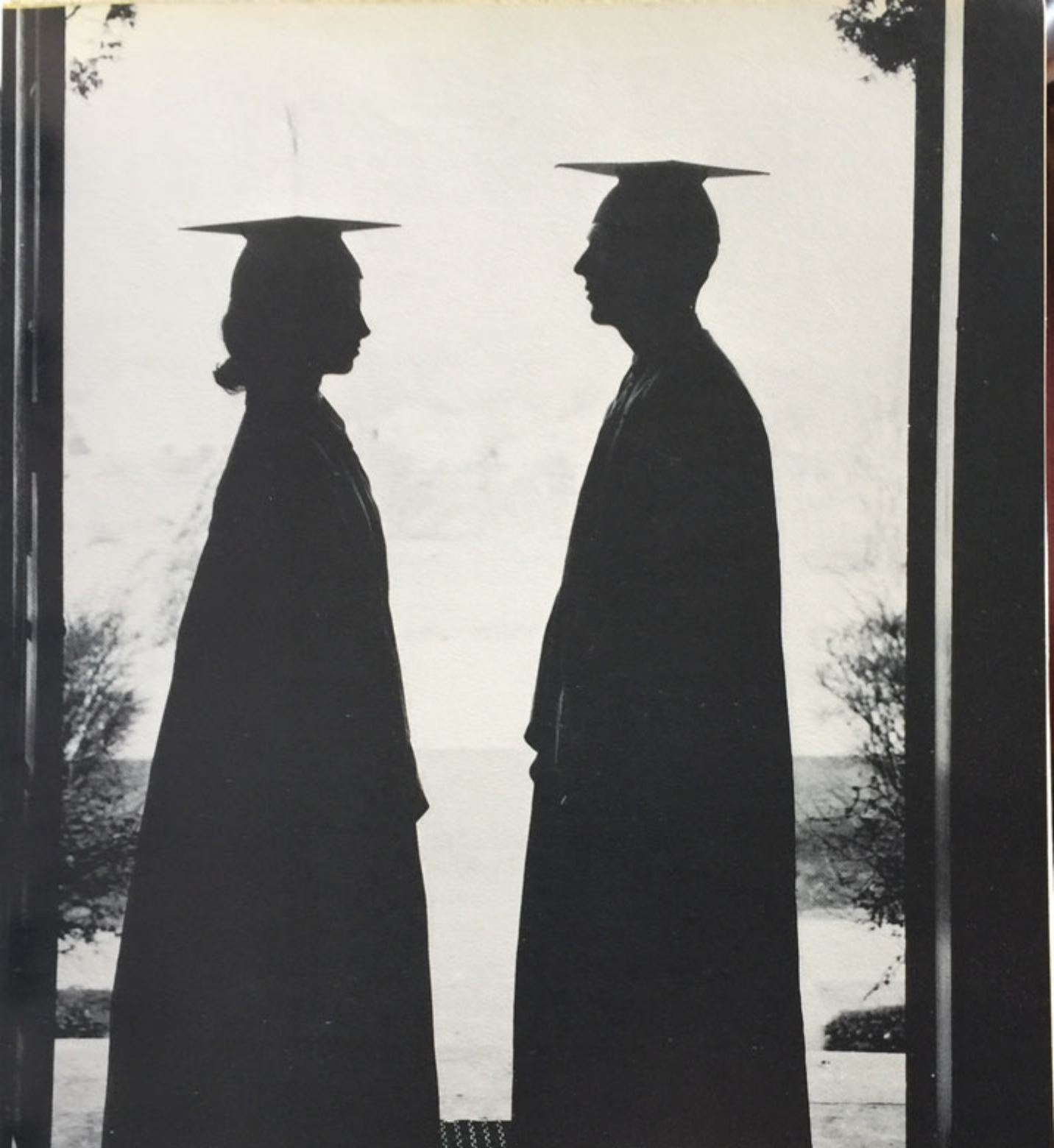
Donald Lawrence



Dorothy Howland



Jack Conklin



SENIORS



KATHY ELAINE BARNES "Kathy"
Commercial Jackson

County Chorus 3,4; Blue Ridge Chorus 3; New Milford Chorus 3; Senior Play 4.

Horses "Goodnight" Wasting Time



EUNICE BERNITA BARRY "Bonnie"
Commercial Hallstead

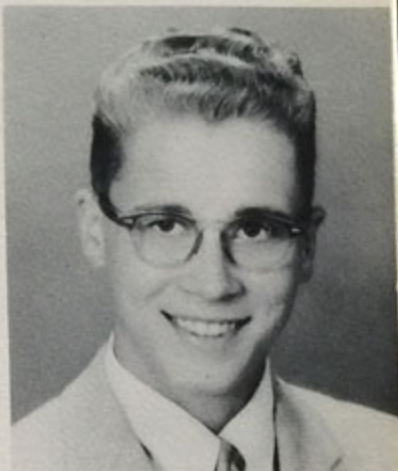
Hallstead Chorus 1,2,4; Track 1; Blue Ridge Chorus 4; Girl's Ensemble 2.

English Class "Shut-up, Jackson" "Rony"

ELWIN HENRY BROWN "Brownie"
Commercial Jackson

Junior Band 1; Senior Band 2; Blue Ridge Chorus 3,4; Junior Play 3; County Chorus 3,4; New Mildord Chorus 3,4; Senior Play 4; District Chorus 4.

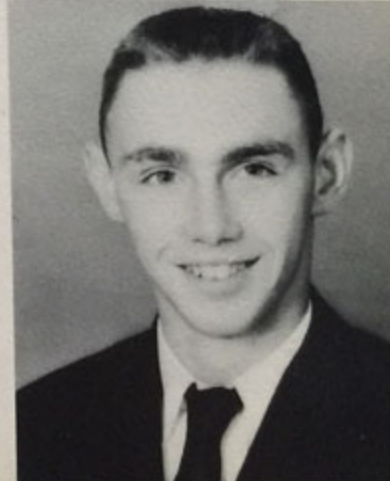
Ice Cream and Pop "Drop Dead" Driving around the Country.



RUSSEL M. CARPENTER "Russ"
Commercial New Milford

Track 1; New Milford Chorus 3,4; Blue Ridge Chorus 3; County Chorus 3; Senior Play 4.

Pick Pocket "Jerk" Bookkeeping



BETTY JEAN CHANDLER "Bet" New Milford
 Commercial
 Volley Ball 3,4; Junior Play 3, Prompter; Senior Play 4, Prompter.
 Jitterbugging "What's Your Excuse?" Volley Ball



MARY ANN CHIDESTER "Mare Bare" Hallstead
 Academic
 Basketball 1,2,3,4; Track 3; Volleyball 3; Hallstead Chorus 2,3,4; Blue
 Ridge Chorus 3,4; Class Secretary 2; Senior Play; District Chorus 4;
 County Chorus 4.
 Blushing "Good Grief" Basketball



EDWARD COLWELL "Eddie" Great Bend
 Academic
 Great Bend Chorus 1; Class Treasurer 1,4; Hallstead Chorus 3,4; Blue
 Ridge Chorus 3,4; County Chorus 3,4; Senior Play.
 The girl next door "Okay, Kid" Milking cows



JACK L. CONKLIN "Jack" Great Bend
 Academic
 Great Bend Chorus 1,2; Hallstead Chorus 4; Photography Club 3; Junior
 Play; Class President 2; Blue Ridge Chorus 4.
 Hunting "Did I ever tell you a lie?" Math



MARJORIE ALICE COONS "Marge" Jackson
 Commercial
 Chewing Gum "Well, I'll see about that" Accordion



MARIETTA JOSEPHINE COSENTINO "Marie" Jackson
 Commercial
 Volley Ball 3,4; Junior Play 3, Prompter; Senior Play 4, Prompter.
 Boys "What are you trying to prove?" Talking

JACQUELYN A. COX "Jackie" Hallstead
 Commercial
 Hallstead Chorus 2,3,4; Blue Ridge Chorus 3,4; Volleyball 2; Junior Play,
 Class Vice President 4.
 Flirting and Talking "Big Deal" Eating pizza



DAVID L. CRAFT "Dave" Hallstead
 Academic
 Baseball 1,2,3,4; Basketball 1,3; Volleyball 2; Athletic Club 1; Gym-
 nastics 2.
 Bowling "Leave More" Going broke



FRANK ERNEST CRONK

"Crank"
Vocational

New Milford

F. F. A. 1,2,3,4.

Getting to School

"Oh cut it out"

Riding horses



BARBARA ANN CUMMINBS

"Bobbi"
Commercial

Hallstead

Hallstead Chorus 1,2,3,4; Blue Ridge Chorus 1,2,3,4; Girls' Ensemble 2;
Junior Play; Class President 3; Class Secretary 1.

Money

"Ye Gads"

Horseback Riding



CAROL ANN DARROW

"Toto"
Academic

New Milford

Junior Play 3; Senior Play 4; Assistant Treasurer 3,4; Secretary and
Treasurer 1; New Milford Chorus 3; Senior News Edition.

Dill Pickles

"Good Gosh!"

Sleeping



MARTHA A. DARROW

"Mardy"
Homemaking

Hallstead

F. H. A. 3.

School

"Who Cares?"

Cooking





CHARLOTTE REBA EMERSON "Charcoal" Hallstead
Academic

Hallstead Chorus 1,2,3,4; Blue Ridge Chorus 2,3,4; Hallstead Band 1,3,4;
Blue Ridge Senior Band 1,3,4; Girls Ensemble 2; County Band 3,4; Bas-
ketball 1,2,3; Junior Play; Photography Club 1; Senior Play.

Post-graduate work Breaking her nose
"You'll never guess what happened!"



LARRY N. FLETCHER "Larry" Great Bend
Shop

Great Bend Band 1; Class Vice-President 2.

Toots Hot rodding
"What do you want; a medal or a chest to pin it on?"

BETTY ANN FOLLET "B. A." New Milford
Academic

New Milford Band 1,2,3,4; New Milford Chorus 1,2,3,4; Blue Ridge
Chorus 2,3,4; Blue Ridge Band 1,2,3,4; County Band 2; Junior Play 3;
Senior Play 4; Tri-Hi-Y 2; County Chorus 4.

Doodling "Oh, Fruit!" Giggling



LOVINA MAY FULLER "Venny" New Milford
Vocational

F. H. A. 1,2,3,4; President F. H. A. 4.

Foreigners "Oh, Ge Whiz" Dishes



BETTY JEAN GALLOWAY

"Toots"
Homemaking

Great Bend

J. V. Basketball 1; F.H.A. 1,2,3,4; Great Bend Chorus 1,2; Senior Play.

You

"Holy Crow"

Eating



THOMAS PERRY GOFF

"Tom"
Vocational

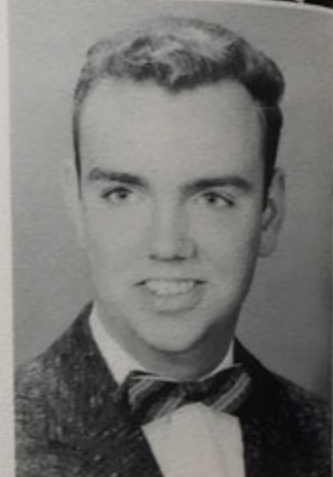
New Milford

F. F. A. 1,2,3,4; F. F. A. Sentential 2; F. F. A. Secretary 3.

French Fries

"How Do I Know"

Mechanics



DUANE RICHARD GULICK

"Curly"
Commercial

New Milford

Typing

"I wish I had some money"

Sleeping in class



DUANE SAMUEL HARVEY

"Harvie"
Commercial

Jackson

Junior Band 1; Blue Ridge Chorus 3,4; County Chorus 3; New Milford Chorus 3,4.

Cars

"I don't know"

Typing



PHYLLIS ANN HAVEL "Chicken Havel" New Milford
 Academic
 Junior Play 3; Senior Play 4.
 Pizza Pie & Pepsi "Is That So!" Chewing Pencils



ELMER CHARLES HENDERSON "Hanky" Jackson
 Academic
 Pizza Pie "I don't know" French

ALAN JAMES HINKLEY "Jim" Hallstead
 Academic
 Baseball 1,2,3,4; Basketball 2,3,4; Junior Play; Senior Play.
 Van Zandts' Bakery "You scrounge" Horseback Riding



ALICE MAE HOAL "Al" Jackson
 Commercial
 Vice President 1; Secretary 3,4; Tri-Hi-Y 2; New Milford Chorus 2,3,4;
 New Milford Band 1,2,3,4; County Chorus 3,4; Blue Ridge Chorus 3,4;
 County Band 4.
 Cherry Pie "Yes Dear" Taking Lessons



DOROTHY ANN HOWLAND

"Dot"
Academic

Hallstead

Hallstead Chorus 1,2,3,4; Blue Ridge Chorus 2,3,4; Senior Play.

Latin II

"OH! My gosh"

Organ playing



EVELYN LOUISE HUMBERT "Weezie"
Academic

Jackson

New Milford Band 1,2,3,4; New Milford Chorus 1,2,3,4; Blue Ridge Band 1,2,3,4; Blue Ridge Chorus 2,3,4; Treasurer 2,3,4; Junior Play 3; Senior Play 4; Junior Prom Queen 3; County Band 4.

Flute

"We'll Soon Find Out"

Juggling Books



JUDITH ANN HURLBURT

"Judy"
Commercial

Great Bend

Great Bend Chorus 1; Hallstead Chorus 4; Blue Ridge Chorus 4; J. V. Basketball 1.

Tardiness

"Oh, shut up!"

Riding "somebody's Horse"



BARBARA JEAN JACKSON

"Be Ja"
Commercial

Great Bend

Great Bend Chorus 1,2; Hallstead Chorus 3,4; Blue Ridge Chorus 1,2,3,4; County Chorus 1; Great Bend Band 1; Basketball 1; F.H.A. 1,2; Cheer-leading 1,2,3,4; Class Secretary 1,2.

Taking trips to Old Forge

"ya know what I mean?"

Working at "Jim's"



DALE WILLIAM JESSE "Jessie" New Milford
Commercial

Vice President 2; Baseball 1; Junior Play 3; Senior Play 4.

Girls Jitterbugging



DONALD WATTS LAWRENCE "Ed Hither" New Milford
Commercial

Candy "Jene, Serene, Seventeen" Speeding

NELSON V. LEWIS "Nellybell" New Milford
Academic

Vice President 1; President 2,3,4; Baseball 1,2,3,4; Basketball 1,2,3,4; Volleyball 1,2,3,4; Track 1,2,3,4; Junior Play 3; Senior Play 4; New Milford Chorus 1,2,3,4; County Chorus 3,4; State Track 2,3,4; Captain of Baseball 4; Co-Captain Basketball 4.

Combing Hair "Isn't that nice" Sports



JOANNE WHEATON McCREARY "Jo" Hallstead
Commercial

Hallstead Chorus 1,2,3,4; Blue Ridge Chorus 4; Usherette 3; Junior Play.

History "No, stupid!" Water-skiing



CHRISTINE McLAUGHLIN MENZIES "Chris"
Academic Hallstead

Hallstead Chorus 1,2,3,4; Blue Ridge Chorus 2,3,4; County Chorus 2,3;
Girls Ensemble 2; Princess of Junior-Senior Prom 3; Senior Play;
District Chorus 4; County Chorus 4.

Math "Hot-ta' trot" Dancing



IONE ADONA MERRITT "Own"
Commercial Great Bend

Great Bend Chorus 1,2; Hallstead Chorus 3,4; Blue Ridge Chorus 1,2,3,
4; County Chorus 3; Great Bend Band 1; Hallstead Band 2,3,4; Girls
Ensemble 2; Blue Ridge Senior Band.

Stock Car Fan Official bell-ringer for B.R. Senior Band
"I haven't got one"



LILLIAN ROSE MILLARD "Lill"
Academic New Milford

New Milford Chorus 1,2,3,4; Blue Ridge Chorus 3,4; County Chorus 3,4;
Junior Play 3.

Long Phone Conversations "Oh, Phiffle!" Singing



THOMAS B. MITCHELL "Mitch"
Academic New Milford

Track 1,2,3,4; State Track 2,3,4; Senior Play 4; Junior Play 3; Volley-
ball 4; Senior Newspaper Editor 4; District Track 1,2,3,4.

French "How About That" Airplanes

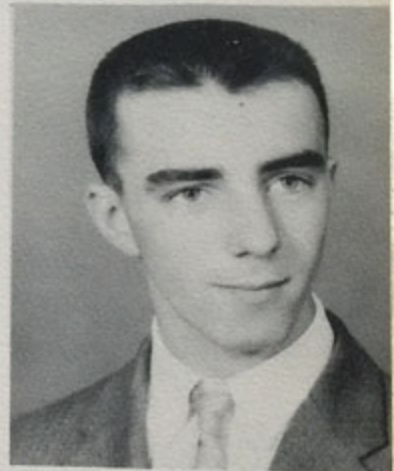


BETTY JAYNE OSTERHOUT "Betts" Hallstead
 Commercial
 Hallstead Chorus 2,3,4; Blue Ridge Chorus 3,4.
 History "Well, for Pete Sake" Shoe Lacing



GERALD B. PECK "Gerry" Jackson
 Commercial
 Junior Play 3; Senior Play 4.
 Tuning Pianos "What did I do now" Cigars

EUGENE RAY PICKERING "Pick" Jackson
 Commercial
 Teasing the Girls "Man Oh Man" Model Airplanes



HOWARD CHARLES PRICE "Tim" Jackson
 Academic
 Junior Band 1; Senior Band 2,3,4; County Band 3,4; Junior Play 3; Senior Play 4; Senior News Editor 4.
 Bowling "What's that you say" Bird Watching



MARILE RUTH ROUNDS "Marybelle" New Milford
Academic

Blue Ridge Senior Band 1,2,3,4; New Milford Chorus 1,2,3,4; Blue Ridge
Chorus 2,3,4; Cheerleader 2,3,4; Yearbook Editor 3,4; County Chorus
3,4; Junior Play 3; Senior Play 4; District Chorus 4; County Band 4.

Trig "I, Like You, Too" Doodling



IDA MAE SCOTT "Scottie" New Milford
Commercial

F.F.A. Chapter Sweetheart 3; Tri-Hi-Y 2; New Milford Chorus 3,4; Junior
Play; Senior Play; Senior News Editor.

Clothes "Oh Yes" Flirting



DORIS MARIE SEAMANS "Comrad" New Milford
Commercial

New Milford Chorus 1,2,3,4; County Chorus 2,4; Blue Ridge Chorus 1,2,
3,4; Tri-Hi-Y 1,2,3; Track 1; County Chorus 4; Ensemble Chorus 4.

Singing "It's Top Secret" Hunting



JAMES SHAW "Jim" New Milford
Academic

President 1; Vice President 3; Volleyball 2,3,4; Basketball 1,2; Track
3,4; Junior Play; Senior Play.

Panna. State Highway Dept. "What's Cha Doin'" Hunting Wild Game



JOHN DAVID SINE "Dave" Great Bend
Academic

Great Bend Chorus 1,2; Hallstead Chorus 3,4; Blue Ridge Chorus 1,2,3,4;
County Chorus 3; Great Bend Band 1; Basketball 2,3,4; Baseball 3;
Junior Play; Class Treasurer 2; Class Vice-President 1,3; Senior Play;
County Chorus 4.

Blondes "That's the breaks of the game" Basketball



JEAN ALICE SINNETT "Fluff" Hallstead
Commercial

Blue Ridge Chorus 1,2,3,4; County Chorus 1,2; Hallstead Chorus 1,2,3,4.

Art "Oh! Brother!" Saving Money

JOHN J. SKARITZA "Jack" Great Bend
Academic

Great Bend Chorus 1,2; Hallstead Chorus 3,4; Blue Ridge Chorus 1,2,3,4;
County Chorus 1,2,3; Basketball 2,3,4; Junior Play; Class President 1;
Class Treasurer 3; District Chorus 4; County Chorus 4.

Girls "Censored" Eating



SUZANNE DENISE SKARITZA "Suzy" Great Bend
Academic

Great Bend Chorus 1,2; Hallstead Chorus 3,4; Blue Ridge Chorus 2,3;
County Chorus 3; Girls Ensemble 2; Junior Play.

Reading "Oh, Ratza-fritz!" History



GAYLE SLOCUM

Vocational

New Milford

Basketball

"Oh Gee"

Getting To School on Time



CARL B. SMITH

"Smitty"
Vocational

New Milford

F. F. A. 1,2,3,4; F. F. A. Chaplain 3.

Farm

"You Don't Say"

Wait For Bus



GERALD EDWARD STAEL

"Fritzs"
Vocational

New Milford

Reading

"What do you know about the price of tea in China?"

Carpentry



RALPH E. SWARTZTRAUBER

"Schwartie"
Vocational

New Milford

School

"Right"

Digging Graves



RICHARD ANDREW TERBOSS "Rich" Hallstead
Academic

Baseball 1,2,3,4; Basketball 1,3; Volleyball 3,4; Track 2; Athletic Club 1; Class President 1,2; Senior Play.

Chess "I fail to see the connection" Baseball



CAROLYN R. VAN LOAN "Carol" Hallstead
Homemaking

F. H. A. 3.

School "I don't care" Sports

BARBARA JEAN VOGEL "Bab-O" Hallstead
Commercial

Hallstead Chorus 1,2,3,4; Blue Ridge Chorus 3,4; Usherette 3; Class Secretary 4; County Chorus 4; Girl's Ensemble 2.

Money "Oh, Blast" Talking



JOAN LOUISE WAGNER "Joanie" New Milford
Academic

Secretary 2; Vice President 4; Junior Play; Senior Play.

Hot Olives "Ah, Come On" Calling Harford



LEE GERALD WARREN

"Lee"
Vocational

New Milford

F. F. A. Chaplain 2; F. F. A. President 4.

Animals

"Forget It"

Farming



RAELENE LOIS WELCH

"Rae"
Commercial

Hallstead

Hallstead Chorus 1,2,3; Basketball 2; Photography Club 1.

Fast talker

"Oh, Bug"

Eating



ALETHA ANN WHITE

"Seakie"
Commercial

Hallstead

Hallstead Chorus 1,2,3,4; Blue Ridge Chorus 4; Usherette 3.

Math

"Oh, Christmas"

Cooking



NELSON LEON WHITNEY

"Nellie"
Commercial

New Milford

Junior Band 1,2; New Milford Chorus 1,2,3,4; Blue Ridge Chorus 2,3;
County Chorus 3.

Red Cowboy Hat

"Oh Not Again"

Fixing Cars



JAMES W. WILBUR

"Curly"
Academic

Hallstead

Basketball 1; Gymnastics 2; Athletic Club 1; Class Treasurer 1,2; President 4; Junior Play; Senior Play.

Getting Rich in the Stone Quarry "Who, Me?" Going to Great Bend



CAROLE ANN WOOSMAN

"Woosle"
Academic

New Milford

Basketball 3,4; Volleyball 3,4.

Bennings "Put that in your pipe and smoke it."

Sweets

LA VERA YOUNG

"Boots"
Academic

Hallstead

Blue Ridge Chorus 2,3,4; Hallstead Chorus 1,2,3,4; Girl's Ensemble 2; Blue Ridge Concert Piano Solos 1,2,3,4; County Festival Piano Solo 1; County Band 3; Hallstead Senior Band 2,3,4; Vice President 2; Secretary 3; Junior and Senior Yearbook Editor 3,4; Blue Ridge Band 2,3,4; County Chorus 4; Solo and duet for County Chorus 4.

COOKIE

"It's Like, WOW!"

Piano Playing



CLASS HISTORY

FRESHMEN



NEW MILFORD SOPHOMORES



In September 1956, the class of '59 came back after a three-month vacation and settled down as sophomores. We were under the supervision of Mrs. Lois Kingsley. Our class consisted of Kay Ashworth, Kathy Barnes, Marjorie Coons, Marietta Cosentino, Carol Darrow, Suzanne Ellis, Betty Follet, Lovina Fuller, Shirley Groover, Diane Hillis, Alice Hoal, Louise Humbert, Lillian Millard, Marile Rounds, Ida Scott, Doris Seamans, Ruth Stoss, Cordelia Tilley, Joan Wagner, Joyce Wayman, Beryl Whitney, Ruth Wilmarth, Carol Woosman, Elwin Brown, Russel Carpenter, Frank Cronk, Tom Goff, Donald Groover, Duane Gulick, Duane Harvey, Elmer Henderson, Dale Jesse, Donald Lawrence, Nelson Lewis, Tom Mitchell, Gerald Peck, John Phillips, Eugene Pickering, Tim Price, Richard Rafferty, Raymond Reed, Jim Shaw, Carl Smith, Lee Warren, Gordon Wayman, Gene White, Nelson Whitney, and Glen Wilmarth. Class officers were: President, Nelson Lewis; Vice-President, Dale Jesse; Secretary, Joan Wagner; Treasurer, Louise Humbert. Kay Ashworth, Diane Hillis, John Phillips, Richard Rafferty, Raymond Reed, Gordon Wayman, and Glen Wilmarth left us during the year. We had a "Holly Hop" on December 21, 1956. Before we realized it, one-half of our high school days were over.



JUNIORS



In September 1957, the class of '59 were Juniors but were sad because of the automobile accident in which Donald Groover lost his life. We were under the direction of Mr. William Powell. Class officers were: President, Nelson Lewis; Vice-President, Jim Shaw; Secretary, Alice Hoal; Treasurer, Louise Humbert. In our Junior year we sold Brant's milk. Our first big thrill was choosing and receiving our class rings. They simply were the best ever. Next came our St. Patrick's Dance on March 14, 1958, and then our Junior play, "What A Life," under the direction of Mr. Jack Phethean. Finally the biggest event in our Junior year arrived, our Junior Prom, "Shangri-La." Louise Humbert was our Queen with Ida Scott and Joan Wagner as Class Attendants. We had a Disc Jockey Dance just before school was out. Betty Briar, Betty Chandler, Phyllis Havel, Bill Adams, Steve Mills, and Gayle Slocum joined us this year. At last we were seniors with three-fourths of our High School days completed.

At last we were Seniors. We started our Senior year with a Disc Jockey Dance. Our Class sold ice cream and candy during the year. Ralph Schwartztrauber and Gerald Stahl joined us this year. Over the vacation, Betty Briar, Shirley Groover, and Joyce Wayman chose the married life; Beryl Whitney and Steve Mills also left us. Our Class Advisor this year was Mr. Frank Zielenski. Class officers were: President, Nelson Lewis; Vice-President, Joan Wagner; Secretary, Alice Hoal; Treasurer, Louise Humbert. Our Senior play, "Stop the Wedding," under the direction of Mrs. Bridges went by and then our Harvest Ball arrived. Our Valentine Dance in February was another highlight. We were ordering our name cards, collecting ads for the yearbook, and having our pictures taken for the yearbook. The climax of our hopes was just ahead. We were all looking forward to our Washington trip. The rest of our High School days were taken up with preparation for Class Night, Baccalaureate, and for the biggest step for the class of '59-- Graduation.

SENIORS





GREAT BEND SOPHMORES

The first step toward our goal, graduation was to become Sophomores. Our class officers were elected and they were: President, Jack Conklin; Vice-President, John Skaritza; Secretary, Barbara Jackson; Treasurer, David Sine.

Mr. Giangrieco was our home room sponsor. Our projects for the year were selling hot dogs, fudge, and salt water taffy.

Sharon Hibbard, Arnold Colwell, Francis Schlick, and Paul Chinese left us this year. Our German classmate, Karin Filstinger, left us this year to return to her homeland.

Our trip to Rocky Glen ended an exciting and eventful year.

At last we are actually in Senior High School. Our first task was to elect officers. Richard Terboss and La Vera Young were the head of the class as President and Vice-President. Jim Wilbur was Secretary and Mary Chidester was Treasurer.

Our home room teacher and class advisor was Mrs. Hartt. Our class was composed of 22 members.

Chris DeLucia and Mike Jones left school and Gary Burnard moved to the Windsor District. Through an unfortunate accident, Eileen Welch, a friend to each member of the class, passed away. Our class decreased considerably in size.

We all joined in for a day of fun and enjoyment at Rocky Glen at the end of the year. Our goal, graduation, was getting nearer.



HALLSTEAD SOPHMORES

JUNIORS



Hallstead and Great Bend classes were united again this year. Many new friendships were formed. Our class officers were: President, Barbara Cummings; Vice President, David Sine; Secretary, LaVera Young; Treasurer, John Skaritz. Mrs. Hartt was our homeroom sponsor.

At the beginning of the school year, we ordered our class rings, and after anxiously awaiting their arrival, they came in January. We sold candy and stationery to help increase our treasury. Under the direction of Mrs. Hartt, we staged our Junior Play, "Almost Summer."

Carol Stone left us this year to become Mrs. Glenn Teel, and Sue Harrison also left school.

Our Junior-Senior Banquet was held at the New Milford Park View Hotel. Dick Naylor's Orchestra played at our Prom. We initiated the "Queen-Princess" idea at our Prom. Arlene House reigned as Queen and Christine Menzies was crowned Princess. Their attendants were Margaret Holtzman, Marilynn Whalite, Judy Hurlburt, and Jackie Cox. John Joyce and James Wilbur crowned the Queen and Princess.

After the Banquet and Prom, came the other important commencement activities, and those all-important report cards, which said we were Seniors.

At long last our dream became a reality and we were Seniors. Our first project was selling Blue Ridge sweat shirts, and then we began sponsoring the roller skating parties. The cast of the Senior Play was organized and "The Charming Intruder" was performed admirably.

Bill Ulco was the only class member who left school this term.

Our class officers were: President, James Wilbur; Vice President, Jackie Cox; Secretary, Barbara Vogel; Treasurer, Edward Colwell.

Our Washington trip, Class Night, Baccalaureate, and Commencement--we will have reached our goal--graduation.

SENIORS



CLASS WILL

- I, Kathy Barnes, will a hula hoop to Donna Darrow so she can improve her swing.
- I, Elwin Brown, will my best behavior to Mr. Powell during any future study halls.
- I, Russell Carpenter, will my ability to get out of shorthand class to Bobby Glatzel.
- I, Betty Chandler, will my long hair to Mr. Young.
- I, Marjorie Coons, will my shorthand ability to Dorothy Cottrell.
- I, Marietta Cosentino, will my Italian language to Mr. Maughan.
- I, Carol Darrow, will my ability to act to Gary Sumner in hopes that he will.
- I, Betty Follet, will my seat in French class to Carol Donovan so she can sit in front of Mr. Maughan.
- I, Lovina Fuller, will my freckles to Mr. Maylock.
- I, Duane Gulick, will my Plymouth to anyone who can hold it together.
- I, Duane Harvey, will my ability to chew gum to Mr. Zielenski.
- I, Elmer Henderson, will my physique to Mr. Maylock.
- I, Alice Hoal, will my freckles to Phyllis Clapper in hopes that she can find some room for them.
- I, Louise Humbert, will a stick of gum to anyone who will wear it on their nose.
- I, Dale Jesse, will my false teeth and long nose to anyone who can hold up their reputation.
- I, Donald Lawrence, will my love of farming to Lee Warren.
- I, Nelson Lewis, will my ability to get away with murder to a couple of potential gangsters in the Junior class. (Harding and MacConnell)
- I, Lillian Millard, will my seat in the Senior room to anyone who will attempt to fill it.
- I, Thomas Mitchell, will my ability to get a deer with ten shots to Mr. Powell.
- I, Gerald Peck, will my "Red Spot" to Mr. Powell.
- I, Eugene Pickering, will my P.O.D. book to some future "lucky" senior.
- I, Tim Price, will my bird watching skill to Mr. Powell.
- I, Marile Rounds, will my ability in sports to Connie Van Housan in case she needs some more.
- I, Ida Scott, will my skill in driving to Mr. Zielenski.
- I, Doris Seamans, will my mathematical ability to my brother, Elbert, if he ever wants some more.
- I, Jim Shaw, will all the hair in Shaw's Barber Shop to Mr. Young.
- I, Joan Wagner, will my seat in physics class to anyone foolish enough to want it.
- I, Nelson Whitney, will my red hat to Mr. Powell to go with his "Red Spot."
- I, Carole Woosman, will my slim figure and ability to get into small places to Sheila Platt.

CLASS WILL

I, Bonnie Barry, will my boyfriend to anybody who feels strong enough to accept the responsibility.

I, Mary Chidester, will my brother's car to Bobbe Kinsley, if there is anything left of it.

I, Edward Colwell, will my vocabulary ability to Judith Kahlar.

I, Jack Conklin, will my mathematic knowledge to anyone who knows what to do with it.

I, Jackie Cox, will my seat in study hall on the stage Wednesday morning to Darlene Lahoda, so she can flirt with that certain boy.

I, David Craft, will my ability to get along with the girls to my brother Dale.

I, Barb Cummings, will to Marsha Holtzman, a rope to keep her sister tied up.

I, Martha Darrow, will my seat in P.O.D. to my brother Wendell.

I, Charlotte Emerson, will to Mary Burdick my ability to get along with her brother.

I, Larry Fletcher, will my driving techniques to Richard Brown.

I, Betty Galloway, will a parking meter to Barb Banker, so she won't stay over-time at the "Old Res."

I, Jim Hinkley, will to Raymond Whaite, an early morning shift during the winter.

I, Dorothy Howland, will my height to the Brown twins.

I, Judy Hurlburt, will to my sister Sandy, my ability to keep a good argument going with a certain Junior girl over a certain Army guy.

I, Barbara Jackson, will my Hudson to Diane Ralston, so she can chauffeur Marsha Holtzman to follow Bill to my house.

I, Joanne McCreary, will my jeep to my sister Sandra, so she can get to school on time.

I, Christine Menzies, will my front seat in Mr. Kelleher's class to anyone who wants it.

I, Ione Merritt, will my glockenspiel to anyone who likes to sleep while the rest of the band is playing.

I, Betty Osterhout, will my loose clothes to Nancy Kelly.

I, David Sine, will my brains in Math Class to Bobby Cook.

I, Jean Sinnett, will Steve LaHoda my station wagon to transport the gang around.

I, John Skaritz, will my ability to solve Physic problems to Bobby Cook.

I, Suzanne Skaritz, will my clothes to my sister Mary Jane, since she wears them anyway.

I, Richard Terboss, will my ability to do everything wrong to Jimmy Florence.

I, Carolyn Van Loan, will my ability to get a boy friend to Marie Stone.

I, Barbara Vogel, will to Fritzi Hall, a thicker pair of glasses to wear while driving.

I, Raelene Welch, will my slim figure to Laura Felton.

I, Aletha White, will to my sister Rosemary, my ability in typing, in hopes that she can do better.

I, Jim Wilbur, will my Plymouth to anyone who can afford to run it.

I, La Vera Young, will my ability to talk to Mr. Supulski during health class to my brother Bob, since he is the subject of conversation anyway.

CLASS PROPHECY

Bill Adams	Auctioneer	Interne at Lourdes
Kathy Barnes	Nurse's Aid	"I can't stay away from the nurses"
Elwin Brown	Auto Mechanic	Bandit
Russell Carpenter	Air Force Mechanic	"Remember Jesse James!"
Betty Chandler	Secretary	Boxer
Marjorie Coons	Secretary	"I go in for the 'Rounds'."
Marietta Cosentino	Housewife	Cook
Frank Cronk	Truck driver	"I still can't boil water."
Carol Darrow	Model	Professional Prompter
Betty Follett	Elementary teacher	"Let me sit on his lap."
Lovina Fuller	Dietician	Founder of the Jackson dance band
Thomas Goff	Mechanic	"I'm its first and last member."
Duane Gulick	Mechanic	Gas station attendant
Phyllis Havel	Fashion Designer	"I get the gas and the oil mixed."
Duane Harvey	Auto mechanic	Jitterbugging champion
Elmer Henderson	French teacher	"I like to wiggle."
Alice Hoal	Secretary	"Cole" miner
Louise Humbert	College	"Just can't get enough 'Cole'."
Dale Jesse	Hair Stylist	Man-Eating cannibal
Donald Lawrence	Navy	"I like 'em all."
Nelson Lewis	College	Ambassador to Russia
Lillian Millard	Beautician	"I love the Slav."
Tom Mitchell	College	Rocket Scientist
Gerald Peck	Mechanic	"I'll go to the moon yet."
Eugene Pickering	Navy	Bus driver
Tim Price	College	"En route to Harford."
Marlie Rounds	College	Professional square dancer
Ida Scott	Beautician	"What do I do now?"
Ralph Schwartztrauber	Mechanic	Soda jerk
Doris Seamans	Beautician	"I always did go for 'Soden'."
James Shaw	Barber	Marriage counsellor
Gayle Slocum	Professional football player	"I like the tear jerkers."
Carl Smith	Army	Yodeler
Gerald Stahl	Army	"And I used to be quiet."
Joan Wagner	Commercial photographer	Secretary of the U.S. Treasury
Lee Warren	Farmer	"I'm still juggling the books."
Gene White	Auto mechanic	Belt fitter in ladies' department store
Nelson Whitney	Mechanic	"Lady, I can't make it go around."
Carole Woosman	Nurse	Tester in a crutch factory
		"I've had enough practice."
		Politician
		"I'm expert at fillbustering."
		Airline Hostess
		"Hostess to a certain 'Follette'."
		Fireman
		"They don't burn out like they used to!"
		Piano tuner
		"They tune better on their side."
		Interior decorating
		"I can't match those colors."
		Univac Tester
		"I'll catch 'em on a question someday."
		First lady president
		"Government of the women, by the women, and for the women."
		Gambler
		"One of these days I'll win."
		Hair dyer
		"I specialize in blondes."
		Head of the WAFS
		"I finally made it to the Pentagon."
		Math teacher
		"2 plus 2 has me puzzled."
		Taxi driver
		"This way I don't have to walk."
		Casanova
		"I like to break hearts."
		Expert in Management methods
		"How to hire and hold a secretary."
		Beautician
		"Bobby's are best."
		"Zoo keeper."
		"I'll catch that tiger someday."
		Auto-wrecker
		"This is the only way I can get business."
		Raising Horses
		"I spend my time at the 'Stahls'."
		President of A.J. Bender and Company
		"I'm his best pretzel bender."

CLASS PROPHECY

Bonnie Barry	Typist	Outlaw Is roaming in the Sherwood Forest.
Mary Chidester	Nurse	Miss Pennsylvania Mary has just won the Miss America Contest.
Ed. Colwell	Electrical Engineer	Farmer Secretary of the Department of Agriculture, Mr. America
Jack Conklin	Electrical Engineer	"I can make you a new man." Chemist
Jackie Cox	Private Secretary	Tests for new types of peroxide. Button Manufacturer
David Craft	President of I.B.M.	Is now making buttons for his own shirts. Secretary Exec. Sec. of "Lindsey Oil" Company.
Barbara Cummings	Secretary	Journalist Is still writing paragraphs on Good Grooming. Publisher
Martha Darrow	Housewife	Is now editing the Medical Bulletin. Executive President of the "Tootsie-Roll" Company.
Charlotte Emerson	Nurse	Saleswoman She's now selling "Fasteeth." Broker
Larry Fletcher	Air Force	He now owns a large office on Wall Street. Composer
Betty Galloway	Housewife	She's writing a duet for trumpet and organ. Stable Owner
Jim Hinkley	Dentist	She's training Chauncey's horses. Columnist
Dorothy Howland	Nurse	Has her own Gossip Column in the Daily News. Author
Judy Hurlburt	Secretary	Is now writing a novel on "How To Keep Young." Publisher
Barbara Jackson	Beautician	Chris is writing a Math book. Executive
Joanne McCreary	Secretary	President of the Carpenter Union. Executive
Christine Menzies	Nurse	President of a free tissue company. Delivery boy
Ione Merritt	Housewife	Is still delivering groceries from Peck's Market. Hair Designer
Betty Osterhout	Secretary	Is now assisting Enrico Carouso. Research Technician
David Sine	Basketball Coach	Is now trying to find a cure for tired blood. Author
Jean Sinnett	Housewife	Is now writing a sequel to "War and Peace." Scientist
John Skaritz	School Teacher	"Maybe I will go to the moon in a nose cone." Dress Designer
Suzanne Skaritz	Nurse	She now owns her own dress shop on Fifth Ave. Executive
Richard Terboss	Ambitionless	President of Slenderella. Housewife
Carolyn Van Loan	Housewife	Raelene is now a Go-Getter. Secretary
Barbara Vogel	Secretary	Is now working at Winfield Buick and Service Garage. Executive
Raelene Welch	Secretary	President of his own mint. Pianist
Aletha White	Secretary	Is now playing duets with Van Cluburn.
Jim Wilbur	Wealth	
La Vera Young	Piano Teacher	

SENIOR CLASS OFFICERS

CLASS COLORS

Red and White

CLASS FLOWER

Varigated Red and White Carnation

CLASS MOTTO

IN OURSELVES OUR FUTURE LIES

HALLSTEAD
President
Vice President
Secretary
Treasurer

James Wilbur
Jacqueline Cox
Barbara Vogel
Edward Colwell

NEW MILFORD

President
Vice President
Secretary
Treasurer
Assistant Treasurer

Nelson Lewis
Joan Wagner
Alice Hoal
Louise Humbert
Carol Darrow





SENIOR PLAY

New Milford



STOP THE WEDDING

The play took place in the living room of the Wilson residence. As the play opened Lorie Wilson was about to marry Clarence Patterson but her plans were soon changed. The wedding and the lives of everyone concerned were upset when Lorie's old boyfriend, Popcorn Jones was discharged from the Navy and returned to "stop the wedding." From then on a chain of events occurred. Peace was restored when Popcorn with a little persuasion rejoined the Navy.

Mayor Wilson Dale Jesse
 Bill Jones Nelson Lewis
 Verna Wilson Louise Humbert
 Lorie Wilson Carol Darrow
 Clarence Tim Price
 Maggie Jones Betty Follet
 Kristin Jones Joan Wagner
 Brisselbean Elwin Brown
 Susan Kathy Barnes
 Pat Phyllis Havel
 Oscar Jim Shaw

Dean Dibble Marile Rounds
 Capt. Henderson Gerald Peck
 Snow-in-the Face Carole Woosman
 Minister Tom Mitchell
 Mrs. Cooney Ida Scott
 Police Officer Duane Gulick
 A Marine Nelson Whitney
 A Fireman Duane Gulick
 Navy Lieutenant Gene White
 Director Mrs. Bridges

SENIOR PLAY

Hallstead

The Charming Intruder
Three-Act Comedy

The play took place in the Cunningham living room, during the summer. Grandma, who lived in the same house with her son-in-law and two grandchildren, became very upset and disturbed when her son-in-law decided to marry again. Her daughter had been dead only fourteen years. After he brought his new wife home, they were very reluctant to accept her and formed a prejudice against her. Feeling unwanted, the new Mrs. Cunningham, decided to leave.

It was all excitedly settled when Grandma fell in love with the new Mrs. Cunningham's father. Everyone became ashamed of the way they had acted toward her and they welcomed her in their home.

CHARACTERS

Grandma Little, a little old-fashioned	Dorothy Howland
Martin Cunningham, her son-in-law	David Sine
Consuelo Cunningham, his daughter.	Mary Chidester
Richard Cunningham, his son.	Edward Colwell
Priscilla (Sanderson Cunningham), his second wife	Christine Menzies
Hortense Smith, maid of all work at Grandma's	Charlotte Emerson
John Harris, the handy man at Grandma's	James Hinkley
Bruce Bishop, Consuelo's fiance.	James Wilbur
Mary Elizabeth Spilman, Consuelo's girlfriend	Betty Galloway
Herbert Sanderson, Priscilla's father	Richard Terboss
Director	Mrs. Janet Hartt

JUNIOR PLAY

New Milford



"WHAT



A



LIFE"

The curtain rose on the principal's office of Central High School. This at last was "What a Life," our junior play, directed by Mr. Phethean.

Henry Aldrich had one main problem, getting permission to take Barbara Pearson to the Spring Formal. Complications set in-- Henry was caught cheating in a test, accused of stealing the band instruments, and was expelled from school. Finally Henry's life straightened out and all ended happily.

Henry Aldrich, student	Nelson Lewis
Barbara Pearson, student	Carol Darrow
Mr. Patterson, teacher	Tim Price
Miss Pike, teacher	Phyllis Havel
Bill, student	Gene White
Miss Shea, secretary	Marile Rounds
Mr. Nelson, assistant principal	Jim Shaw
Miss Eggleston, teacher	Lillian Millard
Miss Johnson, teacher	Louise Humbert
Mr. Vecchitte, parent	Elwin Brown
Gertie, student	Betty Follet
Mr. Bradley, principal	Dale Jesse
Miss Wheeler, teacher	Ida Scott
George Bigelow, student	Tom Mitchell
Mrs. Aldrich, parent	Joan Wagner
Mr. Ferguson, detective	Gerald Peck

JUNIOR PLAY

Hallstead

ALMOST SUMMER

Three-Act Comedy

The play took place in the living room of the Jones family. Paul Jones was planning to go to the lake for the summer with the rest of the family. Unfortunately, he had a history examination coming up in a few days which he must pass with a high grade in order to graduate. If he failed he would have to go to summer school and miss out on the fun at the lake. His girlfriend, Jane, was going to the lake also. This gave him more incentive for going to the lake.

Paul's sister's boyfriend, Jack, and another boy stole the copy of the exam from the teacher's desk. All the blame was placed on Paul. He almost lost Jane and the respect of all his family, but the boys who really stole the test paper finally confessed.

Luckily, he passed the test with a "90" and all was settled so he could look forward to an enjoyable summer at the lake.

Cast of Characters

Paul Jones	David Sine
Mrs. Jones, his mother	Charlotte Emerson
Mr. Jones, his father	James Hinkley
Junior, his kid brother	John Skaritza
Mary, his sister	Barbara Cummings
Jack, Mary's boyfriend	James Wilbur
Jane, Paul's girlfriend	Jackie Cox
Mr. Smudgely, the principal	Jack Conklin
Anna, the maid	Suzanne Skaritza
Lilah Johnson, in somebody's past	Joanne McCreary

JUNIOR - SENIOR BANQUET 1958

Park View Hotel



Gill

Woogie

Louise

CAROL

VENNY

GERALD

Wagnu

RALPH

Lee

Russell

NELSON

Elwin

MARGE

JERRY

Betty Ann


D. S.


Duane

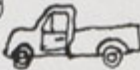
Tom


Don

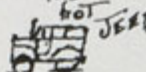
Bonnie R.S.
"59"

Mary "59" 


*** (P.A.K.)
Eddie 

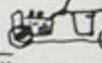
Jack 


Jackie "59" 


"Dave" "59" 


Bobbi
Jim "59"


"Charles" "59" 

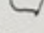
Larry 

Betty 


"Jim" 


"D.A." 


Judi "59" 

John 

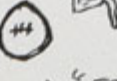
John 

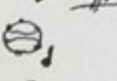
John 


"Chris" "59" 

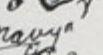
Jane "59" 

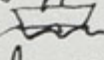
"Betty" "59" 

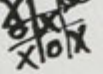
"DAVE" "59" 

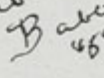
"Jack" "59" 

"Suzy" "59" 

"Carolyn" "59" 


WAVE  8.16.P.


Rich 


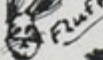
"Barb"  "69"

"Dae" "59"

"Leakies"

Curly "59" 

Boots 

Jean  "art" "59" 

MARY "59" + JOHNNY

Jim

Nelson

MARILE

Ida

Phyl

KATHY

Smitty

mitch

Glaci

Marietta

Hank

Betty

Doris

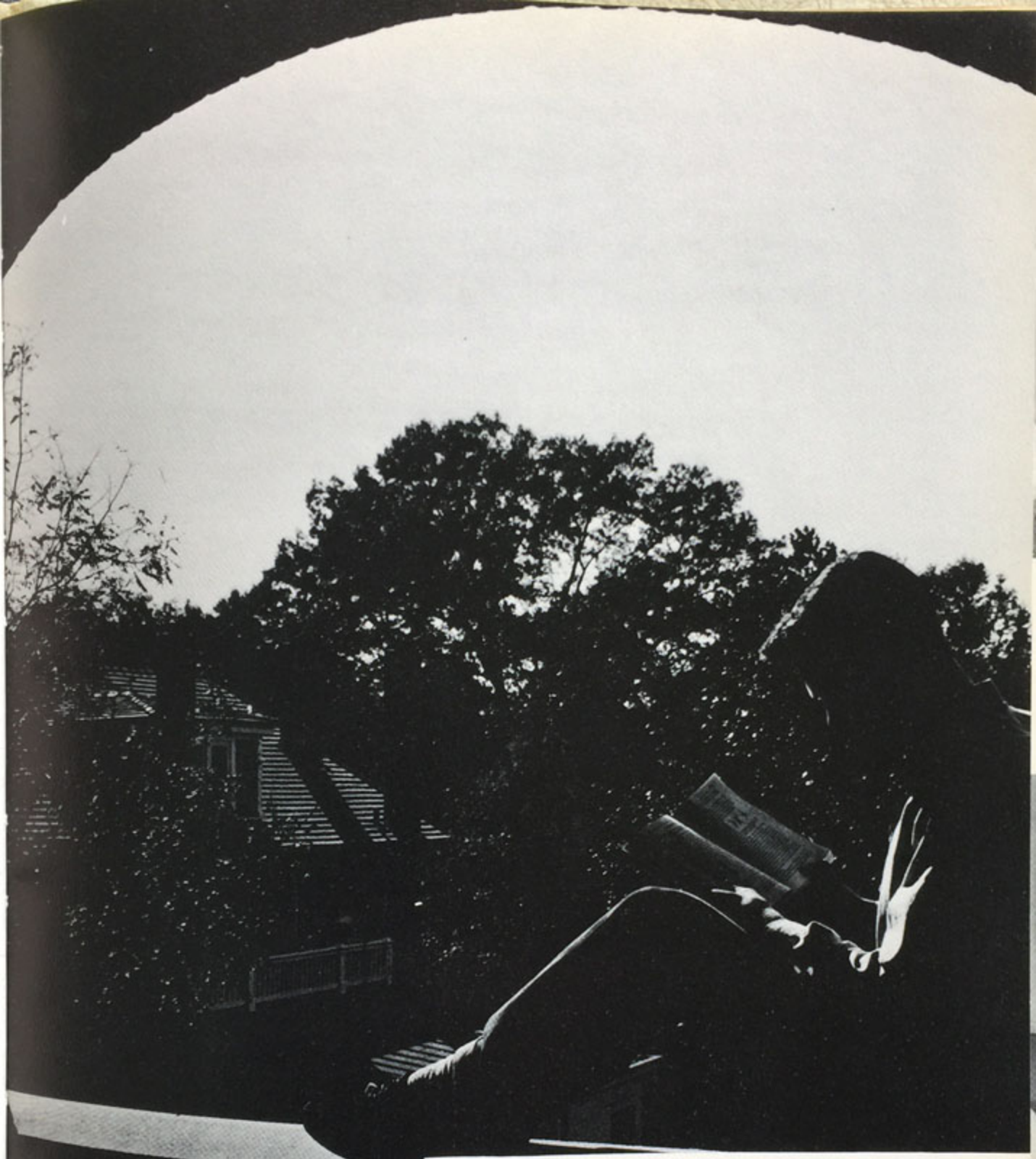
Tim

EUGENE

DALE

FRANK

DUANE



UNDERCLASSMEN

JUNIORS--HALLSTEAD



First Row: N. Kelly, M. White, J. Florance, B. Day, J. Oakley, J. Schooley, S. Donohue, J. Wood, M. Holleran, L. Silver, E. Smith, M. Burdick, L. Felton, D. Schmoll. Second Row: R. Brown, K. Crandal, E. Clottone, M. Rood, F. Lawrence, M. Holtzman, B. Banker, L. Stranahan, E. Savinsky, R. VanLoan, J. Decker. Third Row: D. Sturek, R. Young, D. Burrows, S. Stover, J. Claxton, G. Wells, W. Merrel, A. Hall, R. Cook, S. LaHoda, R. Gula. Fourth Row: T. Morrison, B. Stinnett, A. Vandeymark, E. Fisk, G. Flato, W. Darrow, R. Maloney, K. Welch, H. Aldrich, G. Williams, C. White, T. Boucher, K. Robinson.

JUNIORS--NEW MILFORD



First Row: P. Clapper, D. Randall, D. Darrow, C. Phillips, F. Shay, D. Cottrell, M. Small, R. Hall, S. Rounds, B. Shelp, J. Holbrook. Second Row: G. Oakley, M. Sutton, H. Cramer, L. Wilding, W. Wilson, R. Bodine, R. Glatzel, D. Arthur. Third Row: J. Wildenberger, A. McConnell, J. Thompson, S. Stebbins, J. Darrow, C. Cook, S. Clinton, B. Lawrence, J. Stanton, C. Donovan. Fourth Row: L. Hoal, C. Harding, L. Bodine, C. Yeisley, J. Meanor, R. MacConnell, E. Seamans, P. Barron.

GREAT BEND SOPHOMORES



First Row: B. Joines, P. Stone, K. Moelter, D. LaHoda, A. Forsythe, L. Harris, L. Browman, G. Van-Vleck, L. Humphrey, J. Sanders, S. Knifer, K. Foley. Second Row: L. Lord, B. Jackson, J. Tomeo, J. Babcock, G. Stiles, D. Joines, E. Raub, L. Abbott, B. Kime, B. Smallcomb.

HALLSTEAD SOPHOMORES



First Row: D. Salansky, C. Schooley, R. Kinsley, C. Russell, P. Foote, B. Dyer, S. Wells, V. Crowley, B. Woolbaugh, E. Kovich, C. Smith. Second Row: P. Witkin, G. Tarapata, W. Ross, R. Freeloove, C. Rood, G. Schmick, C. Booth, C. Heir, J. Harris, R. Phelps, D. Ralston, C. Oney, J. Sturek, I. Melynk. Third Row: P. Coyne, R. Ralston, K. Decker, M. Donohue, T. Donohue, J. Tanner, T. Shields, R. Whatte.

NEW MILFORD SOPHOMORES



First Row: M. Henderson, A. Schulz, S. Brown, L. Shay, M. Hand, A. Button, S. Craig, K. Cody, R. Altemeier, J. Proctor, H. Mitchell, J. Cole. Second Row: R. Millard, B. Howell, J. Wilson, D. Vorozilchak, D. Follet, W. Canfield, W. Decker, R. Peck, J. Lewis, R. Lindsey, M. Chandler. Third Row: S. Olmstead, M. Allen, E. Roman, D. McDermott, J. Martin, M. Freitag, M. Moore, P. Flynn, L. Fallon, I. Jicha, P. Warren, M. Benedict. Fourth Row: W. Solonewitz, H. Robertson, F. Ebhardt, J. Briar, T. Shelp, J. Taylor, W. Baker, I. Shibley, R. Wiseman, D. Morris.

GREAT BEND FRESHMEN



First Row: J. Egan, M. Freeman, B. Squires, J. Kahler, S. Hurlburt, M. Skaritzka, P. Conklin, L. Lord, B. Hurlburt, S. Skiba. Second Row: H. Smallacomb, R. Hall, J. Shee, R. Brink, R. Winnie, J. Brink, R. Baglino, K. Aldrich, B. Richards, J. Chauncey, J. Forsythe.

FRESHMEN -- HALLSTEAD



First Row: R. Vanloan, E. Kovitch, N. Woodruff, R. White, C. Richards, J. Johnson, B. Carroll, C. Clark, K. Florance, J. Salansky, P. Kravarik, M. Jamison, D. Howland, E. Mead. Second Row: J. Williams, D. Clapper, R. Carman, J. Crandall, D. Oakley, C. Benyon, A. Lester, D. Rood, N. Vogel, J. McGuire, T. Hackel, D. Davis. Third Row: R. Donohue, R. Chidester, R. Swartwood, J. Decker, S. Darrow, E. Kelly, W. Barry, H. McAulliffe.

FRESHMEN -- NEW MILFORD



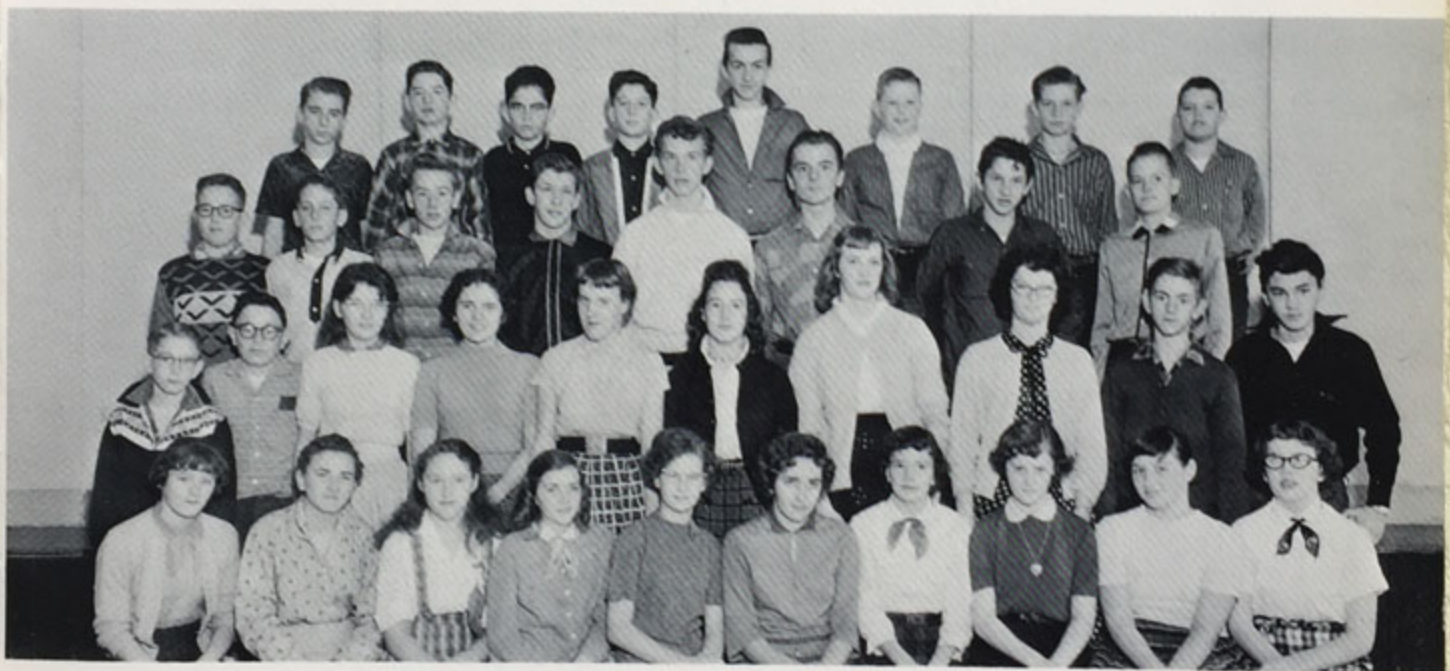
First Row: D. Anderson, E. Wilmarth, C. Barnes, L. Wayman, N. Haynes, A. Slater, S. Magee, K. Jennings, J. Hutchins, C. Whitehead. Second Row: H. Marvin, G. Tingley, K. Morrison, B. Canfield, D. Potter, T. Wittig, R. Osborne, J. Kowalewski, R. Taylor, J. Taylor, K. Yeisley, J. Iglar, H. Seamans. Third Row: S. Platt, N. Palmiter, J. Manning, R. Sicklora, M. Sparks, H. Stahl, T. Williams, C. Stahl, C. VanHousen, S. Shaw, S. Thompson, J. Davis. Fourth Row: J. MacConnell, A. Ziebell, T. Whitney, R. Randall, B. Craft, D. Burman, B. Wilding, P. Churchill, P. Kasimatis, G. Friedrich, D. Trowbridge.

EIGHTH GRADE--GREAT BEND



First Row: P. Brown, N. Sanders, C. Lonzinski, T. Lashinski, S. DeNoyes, R. Soden, M. Fuller, R. Squires, C. Coyne, L. Broman, C. Brown. Second Row: W. Palmer, M. Peck, J. Brink, R. Keely, H. Birtch, E. Bowman, C. Kinsley, P. Colwell.

EIGHTH GRADE--HALLSTEAD



First Row: A. Baringer, B. Waterman, A. Billings, K. Joyce, M. Perry, C. Glover, M. Dyer, B. Tierney, K. Vincent, M. Decker. Second Row: J. Alden, R. Watkins, C. Fiske, E. Stockolm, P. Van-Gorden, D. Slater, J. Farnem, J. Coleman, J. Frelove, C. Westgate. Third Row: C. Clark, M. Hornak, A. Slater, W. Williams, W. Reynolds, W. Lindsey, G. Haskins, C. Melhuish. Fourth Row: R. Schwebke, P. Miller, J. Kelleher, R. Clottone, E. Lindsey, K. Heddins, K. Darrow, E. Mead.

EIGHTH GRADE--NEW MILFORD



First Row: M. Swawola, P. Mikolon, B. Decker, M. Barron, J. Ziebell, S. Darrow, C. Oliver, D. Hoal, D. Thompson, J. Walworth. Second Row: D. Phillips, C. Haynes, G. Darrow, H. Arthur, L. Whitney, N. Dahlander, G. Small, R. Bills, L. Lewis, D. Darrow. Third Row: H. Lewis, R. Thurston, M. Shelp, B. Seamans, A. Wayman, R. Bodine, L. Decker, D. Schwarztrauber, W. Stucker, W. Groover. Fourth Row: J. Scott, J. Shimer, D. Shay, F. Innes, D. Deyo, J. Koshinski, W. Mitchell.

SEVENTH GRADE--GREAT BEND



First Row: C. Shee, L. Kahler, B. Moelter, J. Haskins, D. Humphery, E. Calahan, T. Harrison, N. Farnsworth, M. Shaw, S. Brant, J. Franks, A. Skaritz. Second Row: G. Goldsmith, R. Conklin, G. Bowman, G. Galloway, G. Zurn, G. Soden, D. Phelps, J. Guard, R. Keene, J. Brant, G. Yeomans, J. Griffith, E. Slater, M. Lonzinski, S. Humphery.

SEVENTH GRADE--HALLSTEAD



First Row: N. Sturek, M. Whited, L. Mead, L. Barry, S. Hornak, S. Hussing, P. Bronson, J. Vandeymark, M. Stone, L. Tanner, S. Benedict, D. Lee, M. Melynk, B. Sturek. Second Row: W. Salansky, G. Stover, C. Slater, M. Hazen, T. Welch, S. Oakley, A. Turrell, K. Wilke, L. Sherwood, J. Tanner, J. Ross, J. Sienko. Third Row: A. Walker, G. Folk, W. Carman, R. Vandeymark, P. Welch, J. Tarapata, M. Kovitch, D. Chidester, R. Barriger, E. Vogel, R. Rumage, G. Housen.

SEVENTH GRADE--NEW MILFORD



First Row: S. Ludlow, R. Bills, E. Proctor, M. Kowalewski, C. Stockholm, M. Lewis, L. Bailey, J. Smalley, J. Ames, J. Burman. Second Row: R. Osborne, S. Iglar, G. Walworth, T. Scott, J. Gilchrist, C. Clapper, B. Rounds, W. Bradley, R. Jesse, D. Gulick. Third Row: L. Havel, B. Randall, J. Lawrence, L. Oakley, J. Meanor, K. Sammon, E. Haynes, C. Decker, E. Seamans, S. Grublauskas. Fourth Row: O. Melynk, R. Button, D. Whitney, R. Ziebell, J. Jennings, C. Davis, C. Thurston, J. Cook, R. Williams.

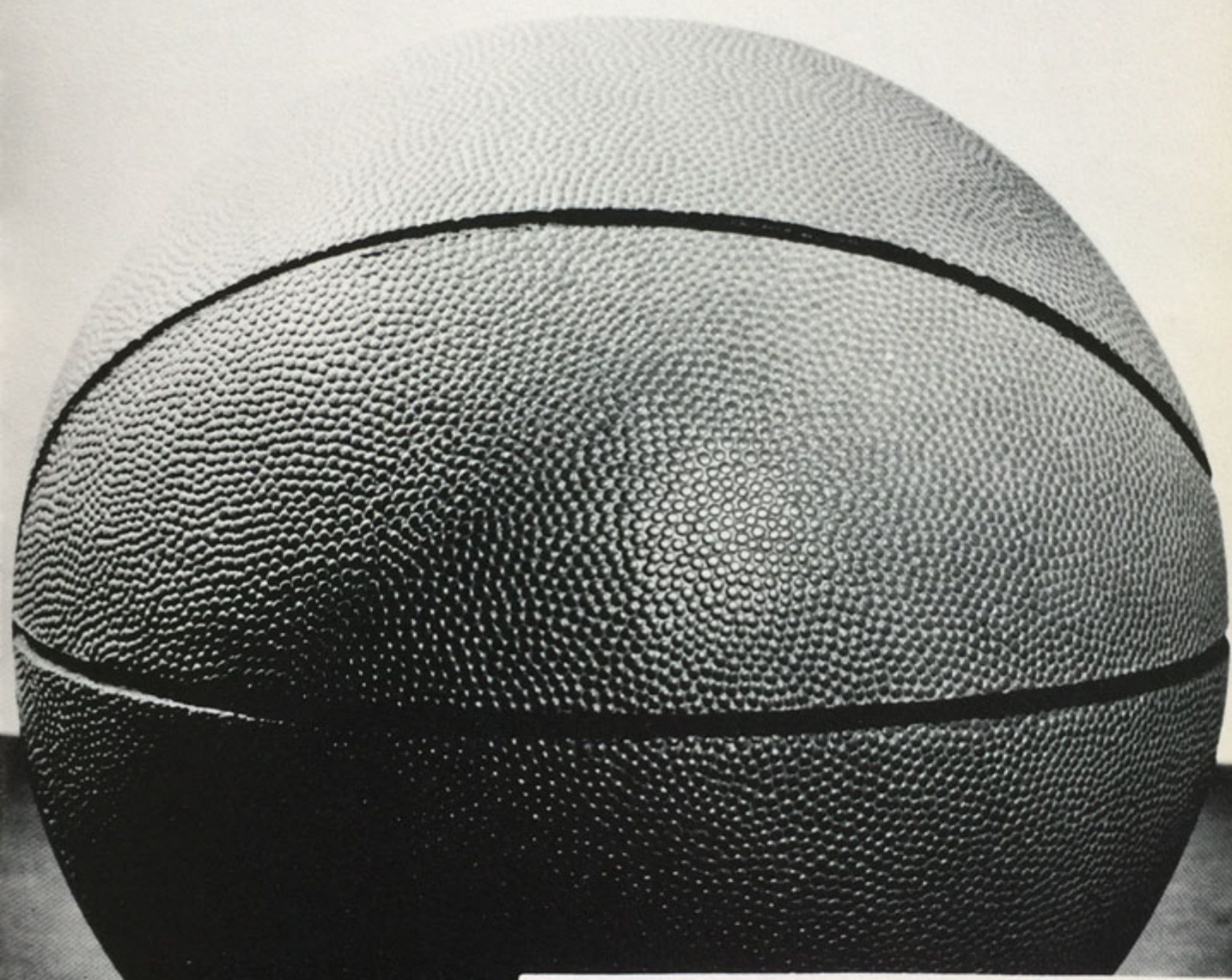
SEVENTH GRADE--JACKSON



First Row: J. Henderson, K. Wayman, R. Gaylord, A. Marvin.
Second Row: D. Hutchins, L. Morales, P. Brown, D. Brown.







ATHLETICS

CHEERLEADERS



S. Donohue, D. Raiston, D. Salansky, B. Emerson, B. Jackson, B. Dyer, S. Rounds, C. Phillips, E. Clotone,



DYNAMO
 Dynamo
 Let's go!
 Dynamite
 Let's fight!
 Dynamo Dynamite
 Let's Go, Let's Fight!

RED, WHITE, FIGHT
 Red, White
 Fight! Fight!
 Red, White
 Fight! Fight!
 Red, White
 Fight! Fight!
 Red, White Fight!

BARBARA JACKSON, CAPTAIN

GIRLS' VARSITY BASKETBALL



1st row: J. Florance, J. Wildenberger, A. Lester, C. Russell, B. Woolbaugh, M. Chidester, D. Darrow, C. Rood, C. Booth, C. Heier. 2nd row: Manager S. Wells, M. White, A. Forsythe, B. Joines, R. Kinsley, J. Salansky, E. Stone, D. LaHoda, C. Woosman, K. Moelter, C. VanHousen, Manager P. Flynn, Miss Florance.

BLUE RIDGE BASKET BALL SCHEDULE

Dec.	1	Blue Ridge vs Honesdale
*Dec.	5	Elk Lake vs Blue Ridge
*Dec.	12	Susquehanna vs Blue Ridge
*Dec.	18	Montrose vs Blue Ridge
*Dec.	30	Tunkhannock vs Blue Ridge
*Jan.	2	Preston vs Blue Ridge
Jan.	9	Blue Ridge vs Mountain View
*Jan.	16	Falls-Overfield vs Blue Ridge
Jan.	20	Blue Ridge vs Newton Ransom
Jan.	30	Blue Ridge vs Elk Lake
Feb.	3	Blue Ridge vs Susquehanna
Feb.	6	Blue Ridge vs Montrose
*Feb.	13	Mountain View vs Blue Ridge
Feb.	17	Falls-Overfield vs Blue Ridge
*Feb.	20	Newton Ransom vs Blue Ridge
Feb.	27	Blue Ridge vs Tunkhannock



MARY CHIDESTER



CAROL WOOSMAN

*Denotes Home Games

All Home Games were played in the Great Bend Gym. (7:30 P.M.)



MISS FLORANCE, COACH

BOYS' BASKETBALL



First Row: R. Baglino, J. Skaritzza, S. Lahoda, R. Gula, R. Cook, Mr. Robert Franks. Second Row: C. Yeisley, J. Hinkley, N. Lewis, R. McConnell, D. Sine, L. Bodine, Manager R. Van Loan.

This season we finished in third place behind Montrose and Elk Lake with Preston our only other defeat, avenged at a home game. This year, we are losing two senior starters, Nelson Lewis and David Sine; as well as three other senior players--James Hinkley, Richard Terboss, and John Skaritzza. However, our first string juniors--Robert Cook, Robert McConnell, and Carl Yeisley--will be back next year, augmented by sophomore Robert Baglino, and junior Robert Young.



COACH FRANKS

DAVID SINE, NELSON LEWIS

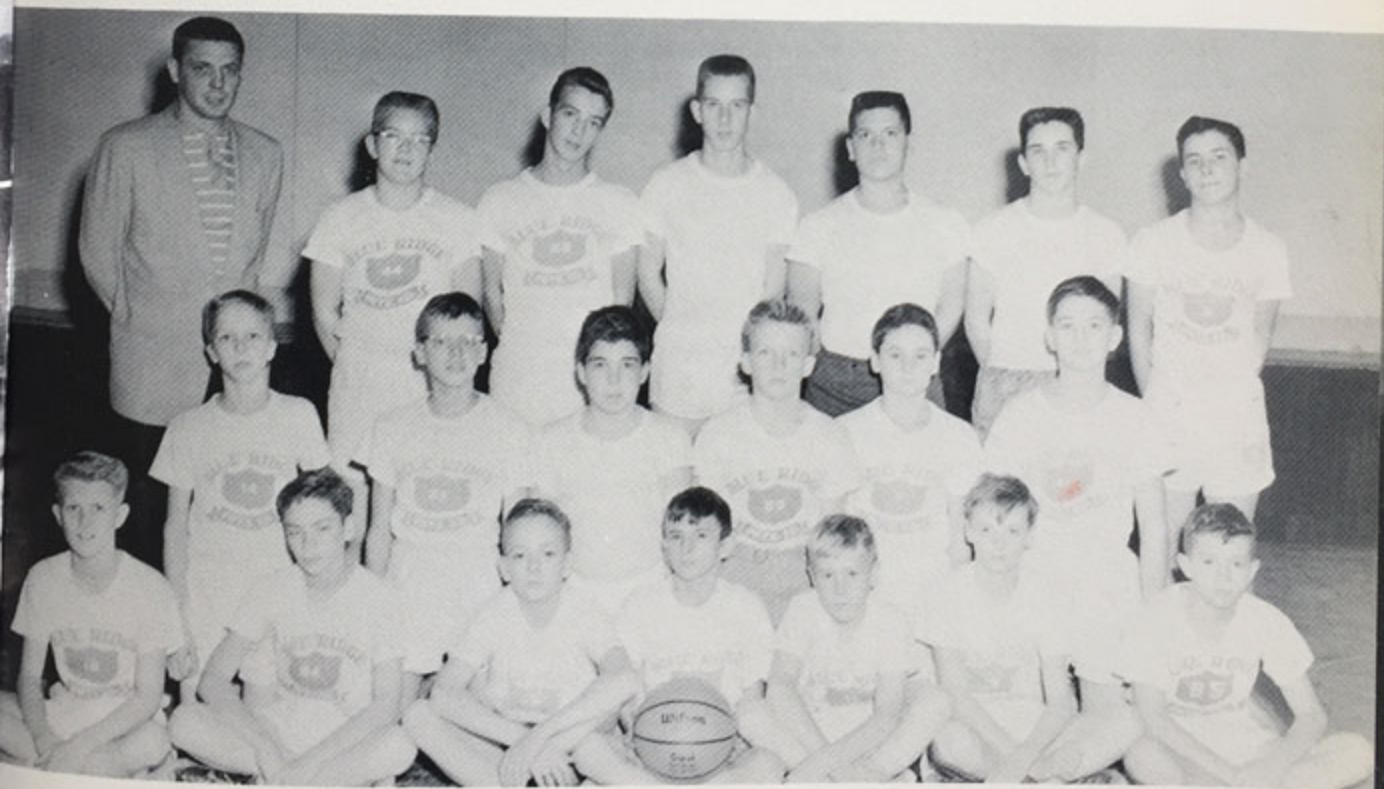




SEVENTH AND EIGHTH GRADE GIRLS' BASKETBALL



SEVENTH AND EIGHTH GRADE BOYS' BASKETBALL



BASEBALL



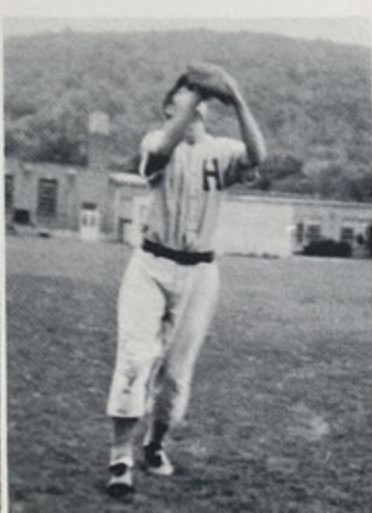
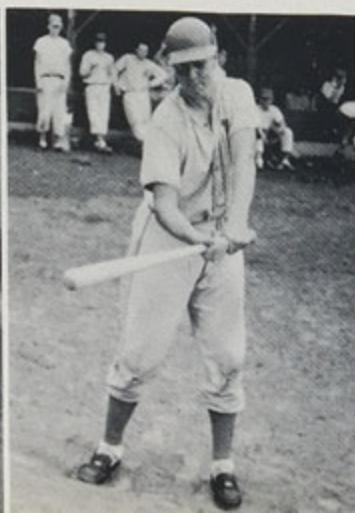
Front Row: R. Terboss, D. Craft, N. Lewis, R. MacConnell, R. Cook, G. Wells, C. Yiesley. Back Row: R. Stiles, J. Babock, S. Stover, S. LaHoda, J. Hinkley, K. Decker, R. Gula, K. Robinson, D. Craft, J. Tomeo, H. Lewis, Coach Supulski.

Nelson Lewis

James Hinkley

David Craft

Richard Terboss



GIRLS' VOLLEYBALL



BOYS' VOLLEYBALL



BOYS' JUNIOR HIGH TRACK TEAM



W. Groover, W. Jackson, H. Lewis, D. Craft, J. Babcock, Mr. Supulski, C. Kinsley, D. Burman, R. Keeley, J. MacConnell, J. Tomeo.

MILE RELAY TEAM

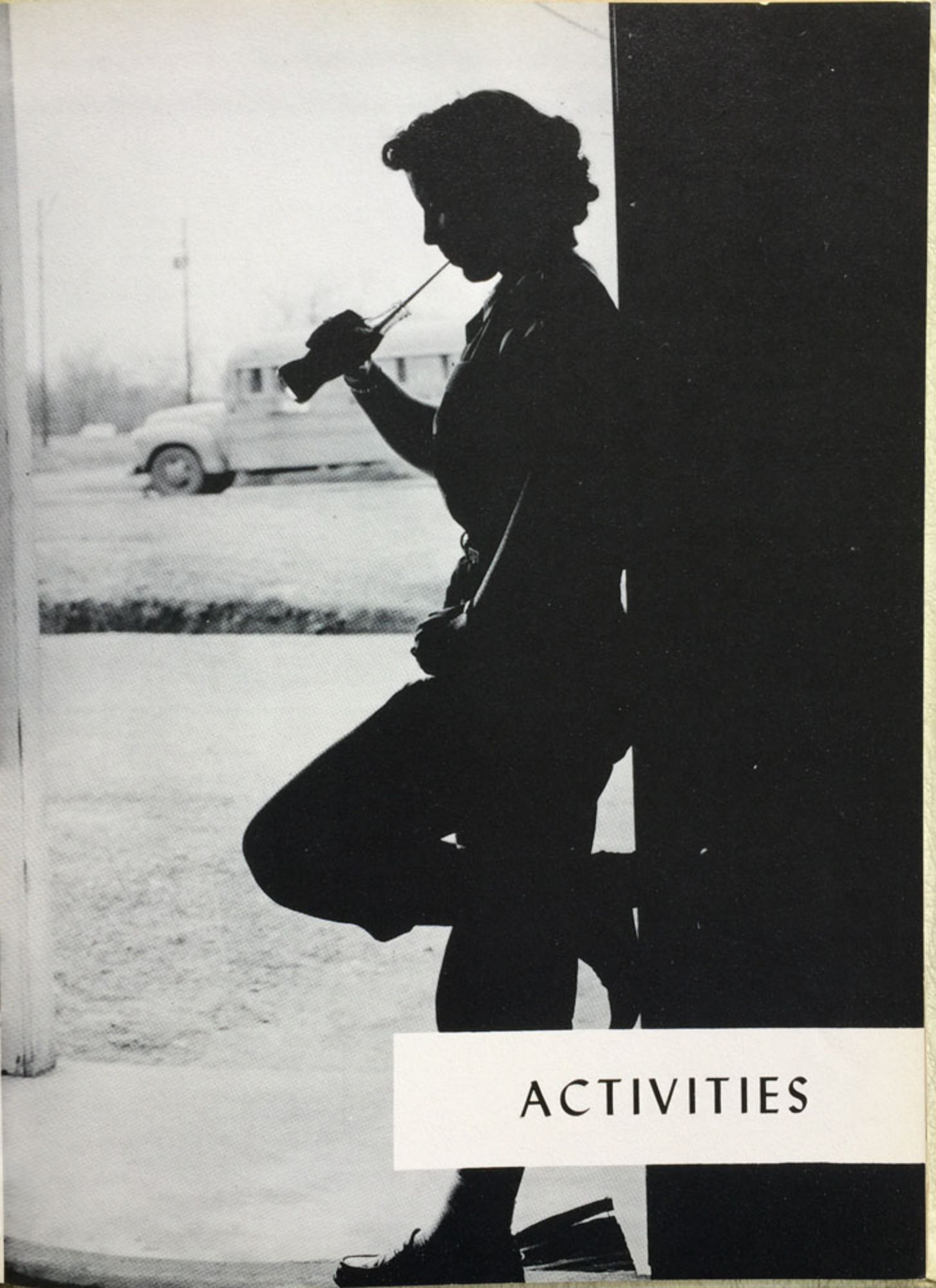


Nelson Lewis



380 RELAY TEAM





ACTIVITIES

BLUE RIDGE CHORUS



The following chorus members participated in the County Music Festival:

Christine Menzies
Barbara Vogel
Kenneth Decker
Thomas Morrison
LaVera Young
Mary Chidester
John Skaritza
Robert Cook
Edward Colwell
David Sine
Elwin Brown

Doris Seamans
Lillian Millard
Janice Proctor
Ruth Altemeier
Kathy Barnes
Betty Follett
John Taylor
Donald Follett
Tim Wittig
Gerharat Friedrich
Nelson Lewis

We were proud to have five of our chorus members sing in the District Chorus at Stroudsburg in April: Elwin Brown, Marile Rounds, John Skaritza, Mary Chidester, Christine Menzies.

BLUE RIDGE SENIOR BAND



CLARINET

J. Crandall
M. Jamison
R. Sikora
K. Decker
M. Henderson
M. Moore
S. Rounds
M. Burdick
C. Emerson
D. Hoal
K. Cody
M. Benedict

DRUMS

L. Young
G. Williams
D. Craft
T. Price

BASS

R. VanLoan

SAXOPHONE

M. Hornak
P. Miller
K. Jennings
R. Kinsley
W. Williams
B. Follett
R. Ciottone
K. Crandall
S. Stover
D. Burrows
C. Booth
C. Melhuish
R. Phelps

BELLS

I. Merritt

TROMBONE

J. Florance
G. Fredrick

DIRECTOR

Mr. William Williams

FLUTE

G. Schmick
M. Rounds
L. Humbert
C. Cook

TRUMPET

H. McAuliffe
J. Williams
G. Peck
K. Moelter
D. Follett
D. Morris

FRENCH HORN

S. Brown

BARITONE

C. Kinsley

We were represented at the County Music Festival by the following band members: L. Hoal, T. Price, L. Humbert, M. Rounds, A. Hoal, C. Emerson, M. Burdick, R. Kinsley, S. Stover, J. Williams, H. McAuliffe, J. Florance.

BLUE RIDGE JUNIOR BAND



DANCE BAND



First Row: K. Crandall, W. Williams, R. Kinsley, S. Stover, D. Burrows, C. Booth. Second Row: G. Williams, M. Peck, C. Kinsley, H. McAulliffe, J. Williams, J. Florance, J. Gearhart.

NEW MILFORD CHORUS



NEW MILFORD GIRLS' TRIO



Mrs. Bryant, Director; Connie Cook, Accompanist. Trio: Susan Brown, Marion Benedict, Kathleen Cody.

HALLSTEAD CHORUS



HALLSTEAD GIRL'S TRIO



Mrs. Bryant, Director; LaVera Young, Accompanist. Trio: Carol Schooley, Ramona Phelps, Roberta Kinsley.

TRI-HI-Y



President Carol Donovan
Vice President Janet Thompson
Secretary Janice Stanton

OFFICERS

Treasurer Betty Lawrence
Chaplain Sally Clinton
Social Director Roberta Hall

PHOTOGRAPHY CLUB



L. Silver, L. Felton, A. Vandeymark, W. Ross, R. Brown, Mr. Schmick.

FUTURE FARMERS OF AMERICA



President Lee Warren
 Vice President . . . Raymond Bodine
 Secretary William Solonewitz
 Treasurer Gerald Oakley

OFFICERS

Sentinel Larry Bodine
 Chaplain Donald Arthur
 Reporter Walter Rothe

FUTURE HOMEMAKERS OF AMERICA

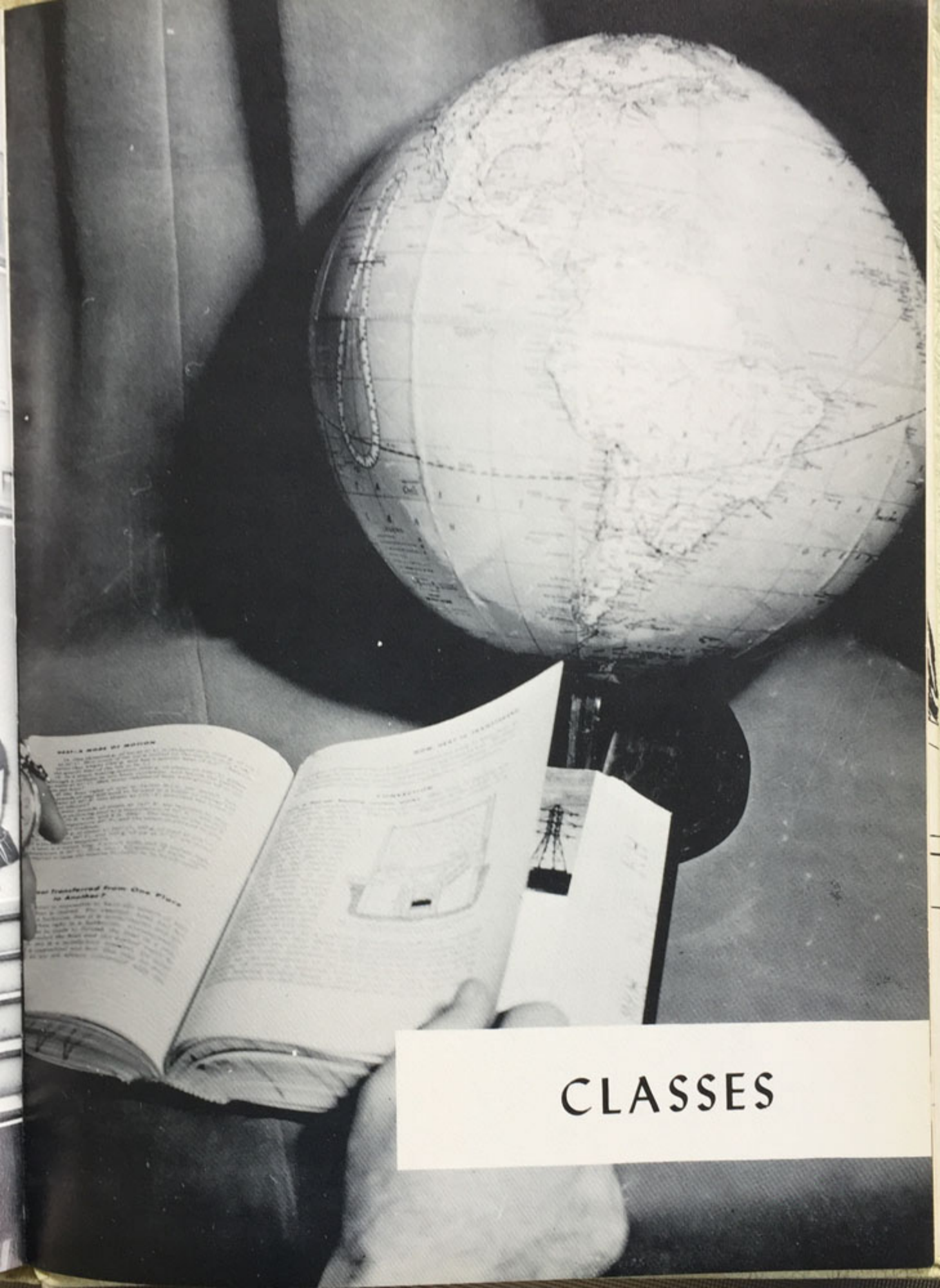


President Lavina Fuller
 Vice President Muriel Allen

OFFICERS

Secretary Barbara Emerson
 Treasurer Betty Galloway





CLASSES



FRENCH II
New Milford



SOLID GEOMETRY
Great Bend

SCIENCE
New Milford



ART
Hallstead





COMMERCIAL
Hallstead



HOMEMAKING
Hallstead

INDUSTRIAL ARTS
Great Bend



COMMERCIAL
New Milford





GUIDANCE & HEALTH
New Milford



INDUSTRIAL ARTS
Great Bend

VOCATIONAL
AGRICULTURE
New Milford



DRIVER TRAINING
New Milford



PATRONS (\$10 gifts)

ALDEN ARMSTRONG, Hallstead
 ATLANTIC SERVICE STATION, New Milford
 C & F MOTOR SALES, Montrose
 CAMP SUSQUEHANNA, New Milford
 CONARTON FUNERAL HOME, Great Bend
 CONRAD'S GARAGE, New Milford
 CRANDAL SUPPLY COMPANY, Binghamton
 D & L SUPPLY COMPANY, Scranton
 DIEGES & CLUST, Carbondale
 GREAT BEND RECREATION
 HALLSTEAD FIRST NATIONAL BANK
 HALLSTEAD IRON FOUNDRY
 HALLSTEAD SUPPLY COMPANY
 P. W. HEATH, GLF, Great Bend
 HICKEY'S MUSIC STORE, Ithaca
 HOLMES FUNERAL HOME, Jackson
 DR. PARK HORTON, New Milford
 KAMINSKI RECAPPING SERVICE, Hallstead
 LAMB'S DAIRY, Susquehanna
 BUD LAWRENCE, New Milford
 LEE'S FURNITURE, Montrose
 CLYDE LINDSEY FUEL SERVICE, New Milford
 MacCONNELL'S SERVICE STATION, New Milford
 DR. MARKARIAN, Hallstead

McCREARY'S INSURANCE AGENCY, Hallstead
 WM. MESS GAS STATION, Great Bend
 MONTROSE DEPARTMENT STORE, Montrose
 MONTROSE DEPARTMENT STORE, New Milford
 MOORE'S GARAGE, New Milford
 MR. WALTER R. MOSHER, New Milford
 PAGE'S DAIRY, Jackson
 PARK PLACE GREENHOUSE, and
 PARK VIEW HOTEL and COFFEE SHOP,
 New Milford
 PECK'S MARKET, Great Bend
 PRESTWOOD PHOTO STUDIO, Scranton
 REDDON'S DRUG STORE, Susquehanna
 RESSIGUE'S DEPARTMENT STORE, Hallstead
 DR. ROBINSON, Hallstead
 SAVORY RESTAURANT, New Milford
 SMALE'S ATLANTIC STATION, Hallstead
 VINCENT STANTON, New Milford
 SUNGAS, Hallstead
 THOMPSON TRAVEL BUREAU, Scranton
 JOHN THOMPSON & COMPANY, New Milford
 TUTTLE'S FUNERAL HOME, Hallstead
 DR. F. J. VALENTINE, New Milford
 WHITNEY'S STORE, Jackson
 YEISLEY FUNERAL HOME, New Milford
 YEISLEY'S MARKET, New Milford

DONORS (\$5 gifts or less)

ADAMS' COMMUNITY STORE, New Milford; A & E GARAGE, Hallstead; ALDRICH'S STORE, Jackson; AUD'S FURNITURE STORE, Hallstead; AUSTIN'S DRUGSTORE, Hallstead; BENNING'S, New Milford; BLUE RIDGE MOTEL, New Milford; BREED'S SHOE REPAIR, Hallstead; BREWER-TITCHNER, New Milford; CAREY'S DINER, Hallstead; C. S. CLAXTON STONE, Hallstead; CUT RATE STORE, Montrose; DAVIS DRY CLEANER, Hallstead; ROBERT DEAN, ATTORNEY, Montrose; NOEL DELANDER, New Milford; DUNHAM'S COAL, Hallstead; LUTHER ELY, INSURANCE, New Milford; ESSOSTATION, M. L. BOGART, Hallstead; G. L. F., New Milford; GULF GAS STATION, New Milford; HACIENDA, Great Bend; HALLSTEAD TRAILER SALES, Hallstead; HOULIHAN SERVICE STATION, New Milford; INTERSTATE BAG COMPANY, Great Bend; J & S TELEVISION, Hallstead; JUEL'S BEAUTY SHOP, New Milford; KATZY'S INN, Great Bend; KEYSTONE HOTEL, Great Bend; DR. RICHARD LATTA, New Milford; LEWIS DEPARTMENT STORE, Montrose; LILLIAN'S BEAUTY SHOP, New Milford; MARY'S BEAUTY SHOP, Hallstead; MONTROSE CLEANERS, ELECTRIC CLEANING, Montrose; MONTROSE ELECTRIC COMPANY, Montrose; MONTROSE SPORTING GOODS, Montrose; LINUS MOORE, New Milford; E. K. OWENS, HARDWARE, Susquehanna; PAPPY'S MARKET, Hallstead; RAYMOND PICKERING, FARM EQUIPMENT, Jackson; PRICE'S SERVICE STATION, Jackson; CHARLES RANDALL, New Milford; RAYMOND & McRAE, HARDWARE, Hallstead; REXALL DRUG STORE, Montrose; ROSS WRECKING SERVICE, Hallstead; SALES & SERVICE, Great Bend; SINGER MFG. COMPANY, Hallstead; DR. E. J. & E. K. SMITH, OPTOMETRISTS, Montrose; STONIER'S FURNITURE STORE, New Milford; STOVER'S MARKET, Hallstead; SWIFT'S, Hallstead; TRADING POST, Hallstead; VANDERVORT FEED MILL, New Milford; VOGEL'S GARAGE, Hallstead; WEBB INSURANCE, Montrose; WESCOTT'S GROCERY, Hallstead; WITTIG'S 5 & 10, New Milford.